

WAAS CH <b>97411</b> <b>W18A</b>	APP CRS <b>181°</b>	Rwy Idg <b>7981</b>
		TDZE <b>129</b>
		Apt Elev <b>131</b>

# RNAV (GPS) RWY 18L

GREENVILLE MID-DELTA (GLH)

RNP APCH - GPS.

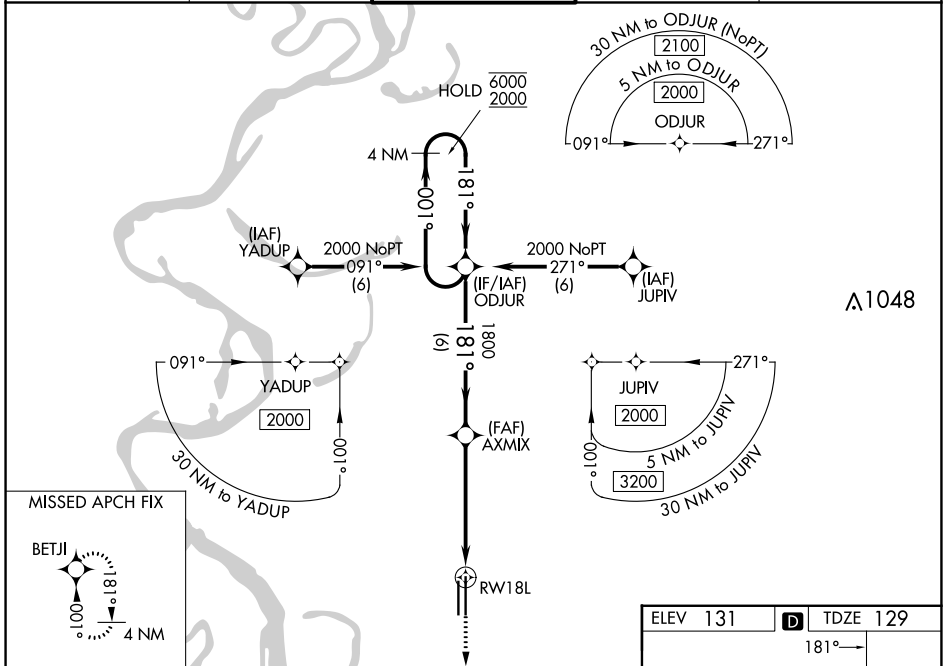
**⚠** For uncompensated Baro-VNAV systems, LNAV/VNAV NA below -7°C or above 54°C. Inop table does not apply to LPV all Cats and LNAV Cat A and B. For inop ALS, increase LNAV/VNAV all Cats visibility to RVR 6000 and LNAV Cats C and D visibility to 1/8 SM.

MALSR

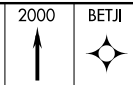
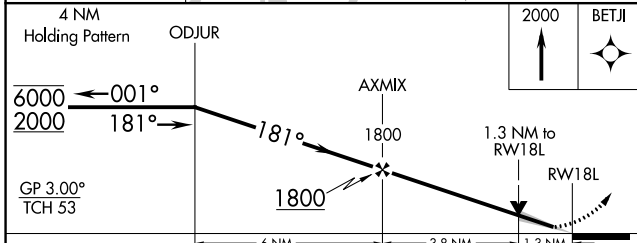


MISSED APPROACH: Climb to 2000 direct BETJI and hold.

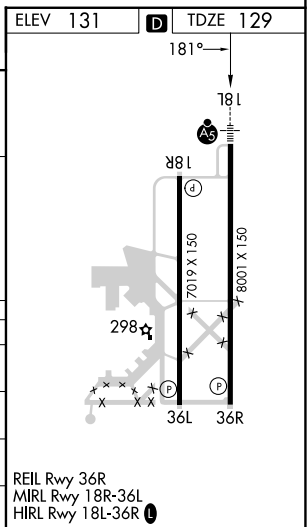
ASOS <b>125.525</b>	MEMPHIS CENTER <b>135.875 269.35</b>	GREENVILLE TOWER* <b>119.0 (CTAF) 256.9</b>	GND CON <b>121.8 256.9</b>	UNICOM <b>122.95</b>
------------------------	---	--	-------------------------------	-------------------------



△1048



CATEGORY	A	B	C	D
LPV DA		329/50	200 (200-1)	
LNAV/VNAV DA		527/50	398 (400-1)	
LNAV MDA		600/50	471 (500-1)	
<b>C</b> CIRCLING	600-1	469 (500-1)	600-1½ 469 (500-1½)	800-2 669 (700-2)



REIL Rwy 36R  
MIRL Rwy 18R-36L  
HIRL Rwy 18L-36R

SC-4, 13 JUN 2024 to 11 JUL 2024

SC-4, 13 JUN 2024 to 11 JUL 2024