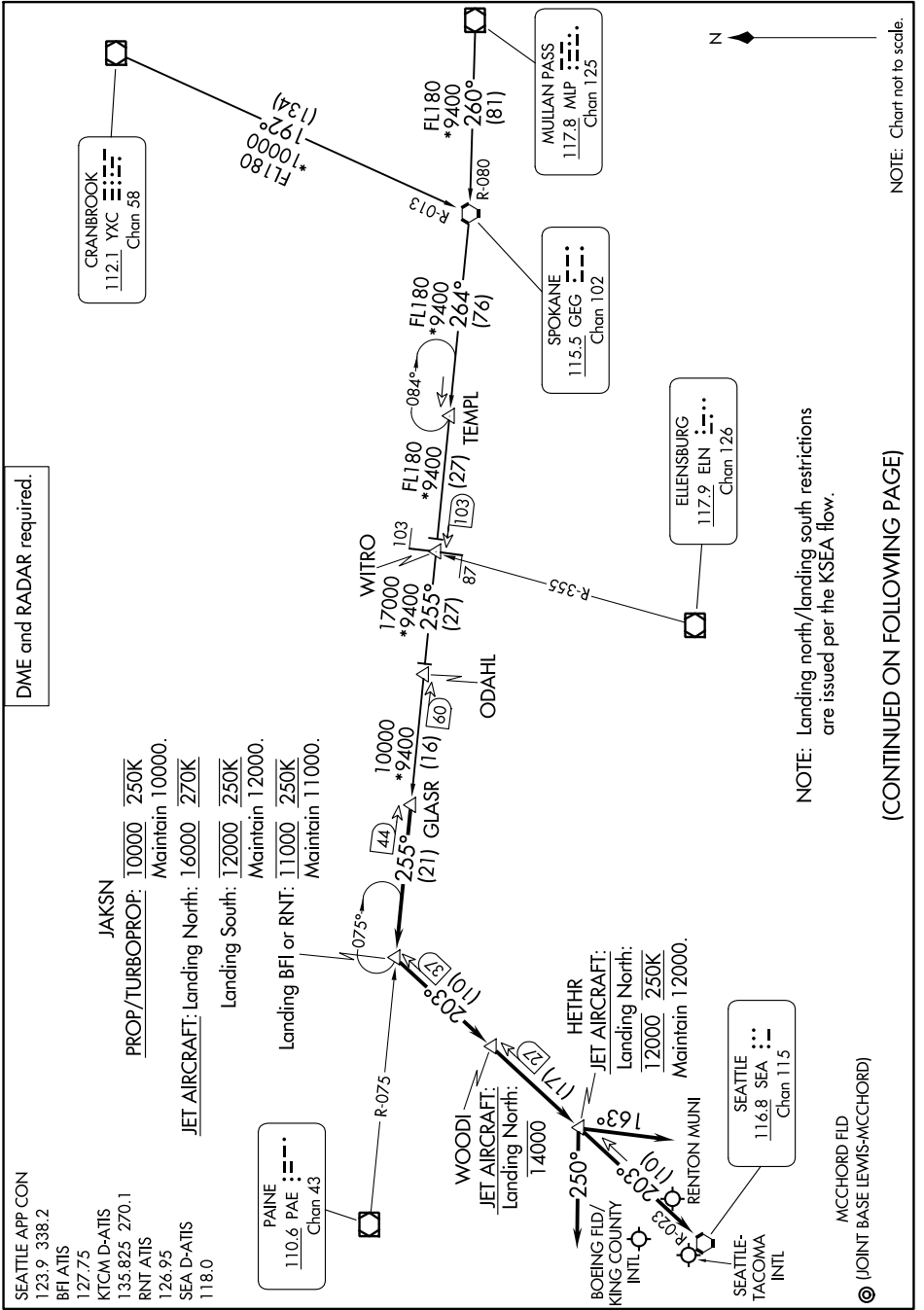


# GLASR THREE ARRIVAL

AL-582 (FAA)

SEATTLE, WASHINGTON

NW-1, 13 JUN 2024 to 11 JUL 2024



DME and RADAR required.

NOTE: Landing north/landing south restrictions are issued per the KSEA flow.

NOTE: Chart not to scale.

(CONTINUED ON FOLLOWING PAGE)

NW-1, 13 JUN 2024 to 11 JUL 2024

# GLASR THREE ARRIVAL

SEATTLE, WASHINGTON

MCCHORD FLD  
(JOINT BASE LEWIS-MCCHORD)