

# SKYKO ONE ARRIVAL

NW-1, 13 JUN 2024 to 11 JUL 2024

SEATTLE APP CON  
123.9 338.2  
BFI ATIS  
127.75  
RIN ATIS  
126.95  
SEA D-ATIS  
118.0

## ARRIVAL ROUTE DESCRIPTION

**EPHRATA TRANSITION (EPH.SKYKO1):** From over EPH VORTAC on EPH R-266 and PAE R-085 to SKYKO. Thence . . . . .

**ODESS TRANSITION (ODESS.SKYKO1):** From over ODESS on EPH R-082 to EPH VORTAC, then on EPH R-266 and PAE R-085 to SKYKO. Thence . . . . .

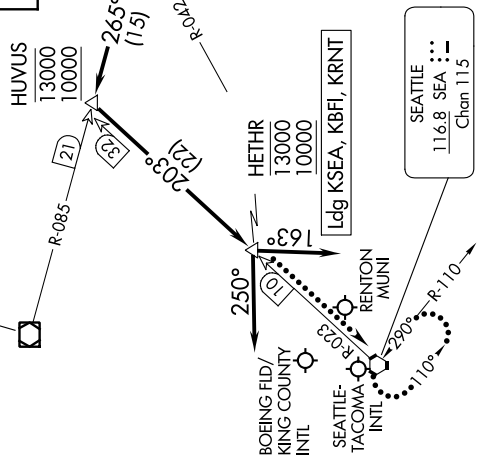
. . . . . from SKYKO on PAINE VOR/DME (PAE) R-085 to cross HUVUS between 10000 and 13000, then on SEATTLE VORTAC (SEA) SEA R-023 to cross HETHR between 10000 and 13000, thence . . . . .

**LANDING NORTH:** Fly heading 163°. Expect RADAR vectors to final approach course.  
**LANDING SOUTH:** Fly heading 250°. Expect RADAR vectors to final approach course.

**LOST COMMUNICATIONS:** Maintain last assigned altitude. From over HETHR, proceed direct SEA VORTAC and hold.



PAINE  
110.6 PAE :---  
Chan 43



# SKYKO ONE ARRIVAL

NOTE: DME required.  
NOTE: RADAR required.  
NOTE: Turboprop and prop aircraft only.

NOTE: Chart not to scale.

NW-1, 13 JUN 2024 to 11 JUL 2024