

LOC I-ILN 110.7	APP CRS 224°	Rwy Idg 10701
		TDZE 1077
		Apt Elev 1077

ILS RWY 22R (SA CAT I)

WILMINGTON AIR PARK (ILN)

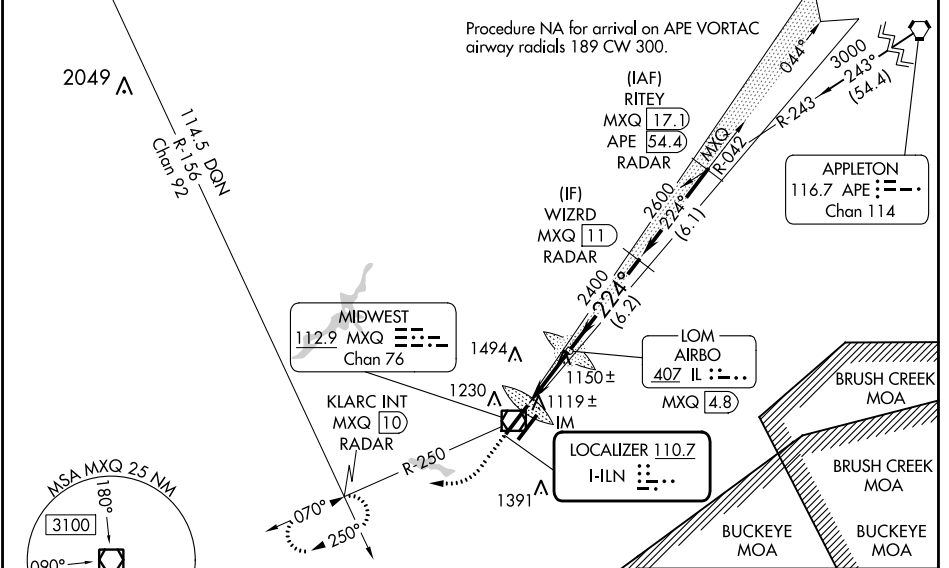
DME or RADAR required for procedure entry.

Simultaneous approach authorized. Requires specific OPSPEC, MSPEC, or LOA approval. Procedure NA when control tower closed. DME from MXQ VOR/DME. DME use requires simultaneous reception of I-ILN and MXQ DME.

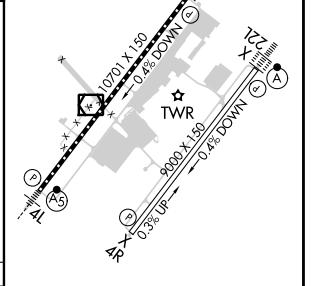
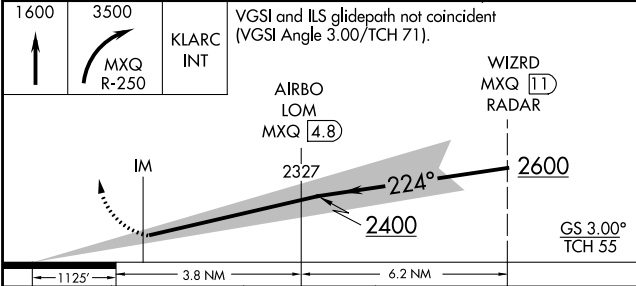
ALSF-2

MISSED APPROACH: Climb to 1600 then climbing right turn to 3500 on MXQ VOR/DME R-250 to KLARC INT/MXQ 10 DME/RADAR and hold, continue climb-in-hold to 3500.

D-ATIS 124.925	COLUMBUS APP CON 118.85 269.275	WILMINGTON TOWER 119.475	GND CON 121.6	CLNC DEL 128.85
--------------------------	---	------------------------------------	-------------------------	---------------------------



ELEV 1077	D	TDZE 1077
-----------	---	-----------



CATEGORY	A	B	C	D
S-ILS 22R	RA 148/14		150 DA 1227	

SA CATEGORY I ILS - SPECIAL AIRCREW & AIRCRAFT CERTIFICATION REQUIRED

TDZ/CL Rwys 22L and 22R
HIRL Rwys 4L-22R and 4R-22L

EC-2, 13 JUN 2024 to 11 JUL 2024

EC-2, 13 JUN 2024 to 11 JUL 2024