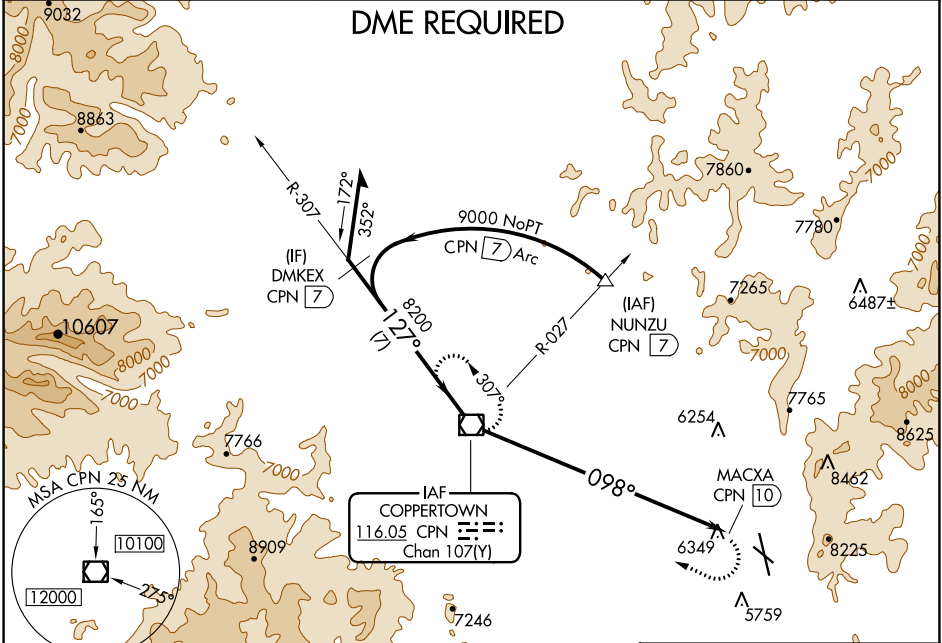


VOR/DME CPN 116.05 Chan 107(Y)	APP CRS 098°	Rwy Idg TDZE Apt Elev N/A N/A 5551
--	------------------------	--

VOR-A
BERT MOONEY (BTM)

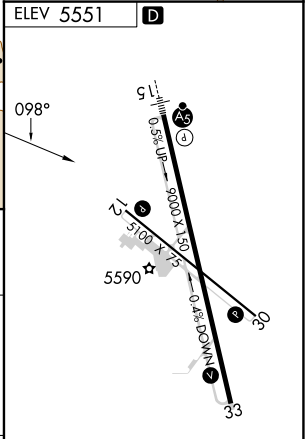
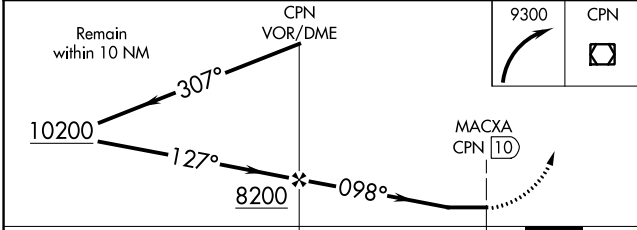
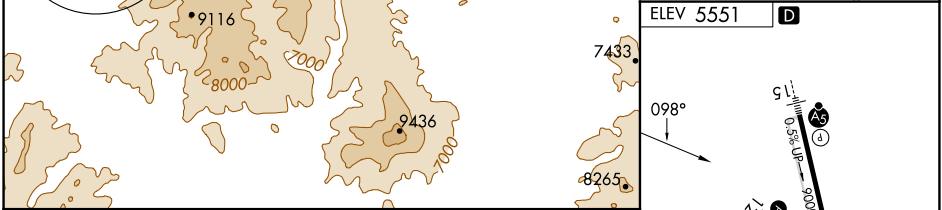
DME required. Circling NA northeast of Rwy 15-33.	MISSED APPROACH: Climbing right turn to 9300 direct CPN VOR/DME and hold.
--	---

ASOS 135.175	SALT LAKE CENTER 132.4 338.3	UNICOM 123.0(CTAF)
------------------------	--	------------------------------



NW-1, 13 JUN 2024 to 11 JUL 2024

NW-1, 13 JUN 2024 to 11 JUL 2024



CATEGORY	A	B	C	D
CIRCLING	7120-1¼ 1569 (1600-1¼)	7120-1½ 1569 (1600-1½)	7120-3 1569 (1600-3)	7140-3 1589 (1600-3)

REIL Rwy 12 and 30

MRL Rwy 12-30 and 15-33