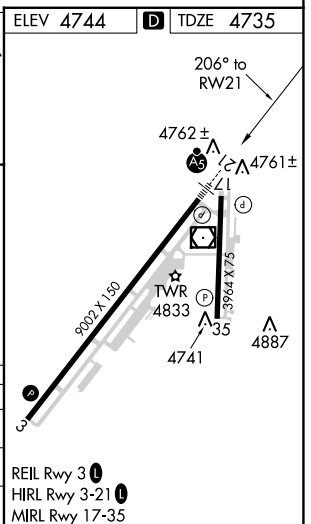
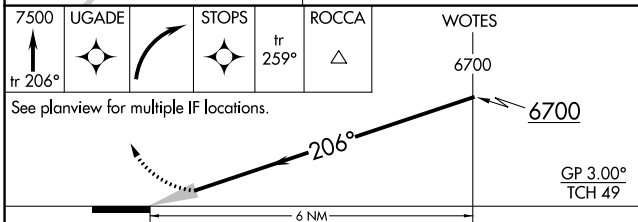
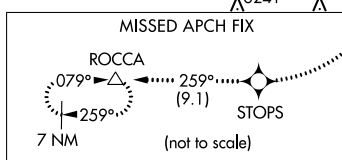
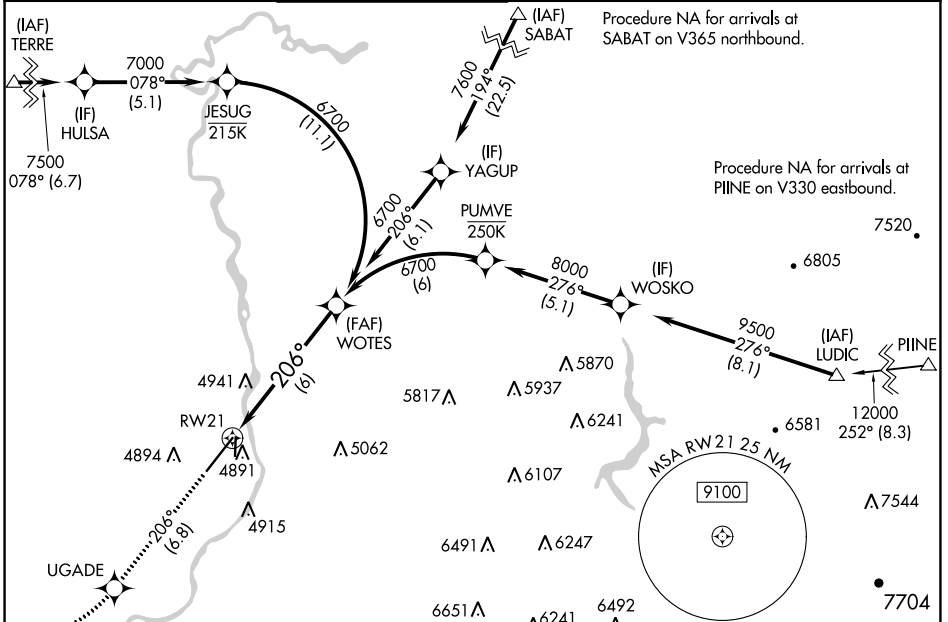


APP CRS	Rwy Idg	<b>9002</b>
<b>206°</b>	TDZE	<b>4735</b>
	Apt Elev	<b>4744</b>

# RNAV (RNP) Z RWY 21

IDAHO FALLS RGNL (IDA)

RNP AR APCH-GPS.		MALSR	MISSED APPROACH: Climb to 7500 on track 206° to WOTES, right turn to STOPS, and on track 259° to ROCCA and hold.						
<p><b>⚠</b> For uncompensated Baro-VNAV systems, procedure NA below -27°C or above 54°C. For inop ALS, increase RNP 0.11 visibility all Cats to RVR 4500.</p>			ATIS	SALT LAKE CENTER	IDAHO FALLS TOWER ★	GND CON	CLNC DEL	GCO	UNICOM
			<b>135,325</b>	<b>128.35 239.25</b>	<b>118.5 (CTAF) 0 257.8</b>	<b>121.7</b>	<b>121.7</b>	<b>121.725</b>	<b>122.95</b>



CATEGORY	A	B	C	D
RNP 0.11 DA		5011/24	276 (300-½)	
RNP 0.30 DA		5120/35	385 (400-¾)	

**AUTHORIZATION REQUIRED**

NW-1, 13 JUN 2024 to 11 JUL 2024

NW-1, 13 JUN 2024 to 11 JUL 2024