

PEORIA, ILLINOIS

# HI-ILS or LOC RWY 31

LOC I-PIA <b>109.9</b>	APCH CRS <b>309°</b>	Rwy Idg TDZE Arprt Elev <b>10,104</b> <b>650</b> <b>661</b>
---------------------------	-------------------------	--

[USAF]

GENERAL DOWNING - PEORIA INTL (KPIA)

ADF required for LOC only

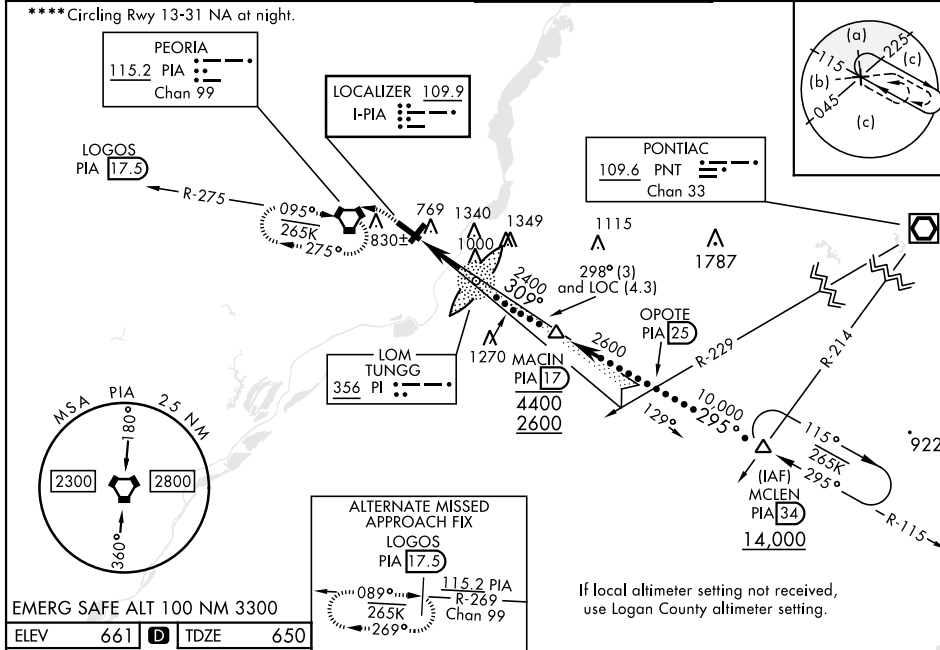
- \* When ALS inop, increase RVR to 40.
- \*\* When ALS inop, increase vis to 1½ miles.
- \*\*\* When ALS inop, increase vis to 1¼ miles.



MISSED APPROACH: Climb to 1200, then climbing left turn to 2400 direct PIA VORTAC and hold. (TACAN aircraft: continue via PIA R-269 to LOGOS/PIA 17.5 DME and hold west, right turn 089° inbound).

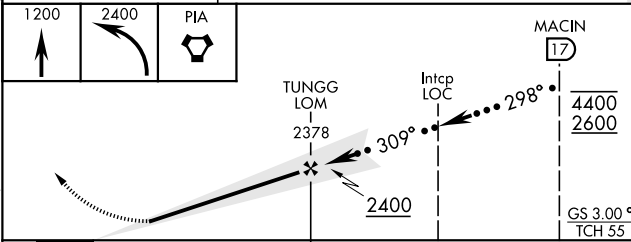
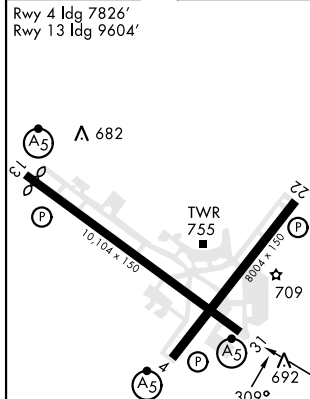
ATIS <b>126.1 282.2</b>	SAINT LOUIS APP CON <b>125.8 269.2</b>	PEORIA TOWER <b>124.0 353.85</b>	GND CON <b>121.85 348.6</b>
----------------------------	---	-------------------------------------	--------------------------------

\*\*\*\*Circling Rwy 13-31 NA at night.



EC-3, 13 JUN 2024 to 11 JUL 2024

EC-3, 13 JUN 2024 to 11 JUL 2024



CATEGORY	C	D	E
S-ILS 31*	850/24	200	(200-½)
S-LOC 31**	1200/60	550	(600-1¼)
<b>C</b> CIRCLING	1200-1½ 539 (600-1½)	1400-2¼ 739 (800-2¼)	1680-3 1019 (1100-3)
LOGAN COUNTY ALTIMETER MINIMA			
S-ILS 31*	939/24	289	(300-½)
S-LOC 31***	1300-1⅞	650	(700-1¾)
<b>C</b> CIRCLING	1300-1⅞ 639 (700-1⅞)	1460-2¾ 799 (800-2¾)	1720-3 1059 (1100-3)

PEORIA, ILLINOIS

40°40'N-89°42'W

GENERAL DOWNING - PEORIA INTL (KPIA)

Amdt 7D 22APR21

# HI-ILS or LOC RWY 31