

APP CRS	Rwy Idg	8004
221°	TDZE	661
	Apt Elev	661

RNAV (GPS) RWY 22

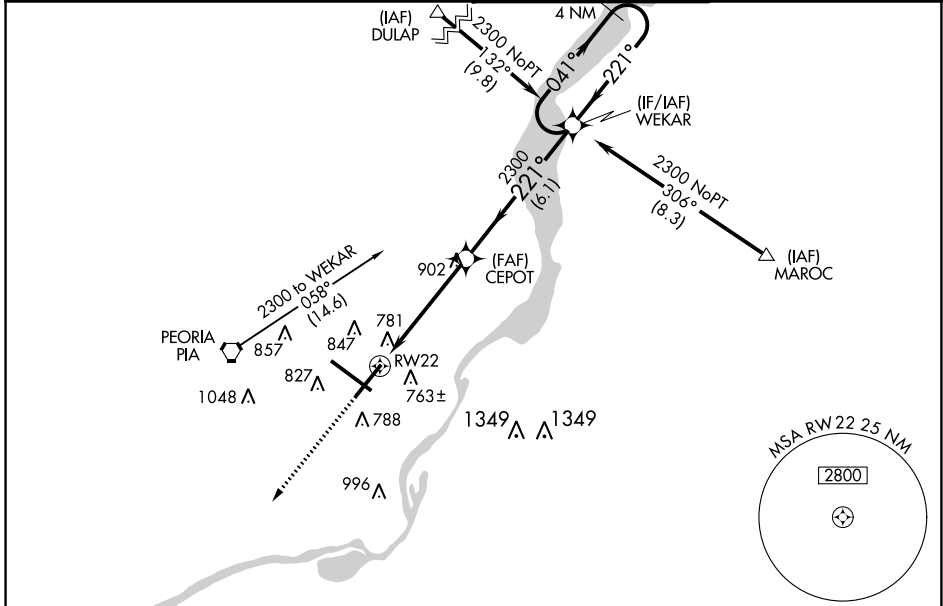
GENERAL DOWNING-PEORIA INTL (PIA)

RNP APCH.

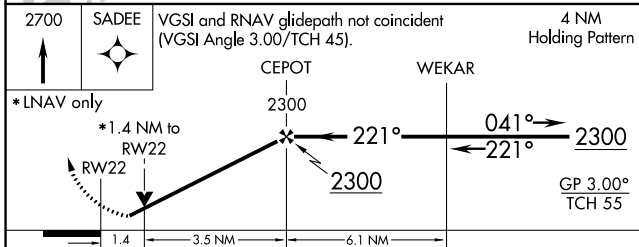
⚠ For uncompensated Baro-VNAV systems, LNAV/VNAV NA below -19°C or above 54°C. When local altimeter setting not received, use Logan County altimeter setting and increase all DA 89 feet and all MDA 100 feet, increase LNAV/VNAV DA all Cats visibility to 1½ mile, LNAV MDA Cat C and D visibility to ¾ mile, and Circling Cat C ½ mile and Cat D ½ mile. Baro-VNAV and VDP NA when using Logan County altimeter setting. Rwy 22 helicopter visibility reduction below ¾ SM NA. Circling Rwy 13, 31 NA at night.

MISSED APPROACH: Climb to 2700 direct SADEE and hold.

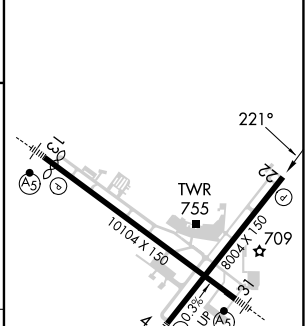
ATIS	SAINT LOUIS APP CON	PEORIA TOWER	GND CON
126.1 282.2	125.8 269.2	124.0 353.85	121.85 348.6



2700	SADEE	VGSI and RNAV glidepath not coincident (VGSI Angle 3.00/TCH 45).	4 NM Holding Pattern
------	-------	--	----------------------



ELEV 661	D	TDZE 661
----------	----------	----------



CATEGORY	A	B	C	D
LNAV/VNAV DA	1093-1⅜		432 (500-1⅜)	
LNAV MDA	1160-1	499 (500-1)	1160-1⅜	499 (500-1⅜)
C CIRCLING	1160-1	499 (500-1)	1180-1½ 519 (600-1½)	1400-2¼ 739 (800-2¼)

HIRL Rwy 4-22 and 13-31

EC-3, 13 JUN 2024 to 11 JUL 2024

EC-3, 13 JUN 2024 to 11 JUL 2024