

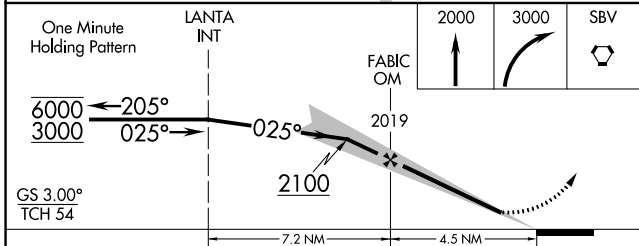
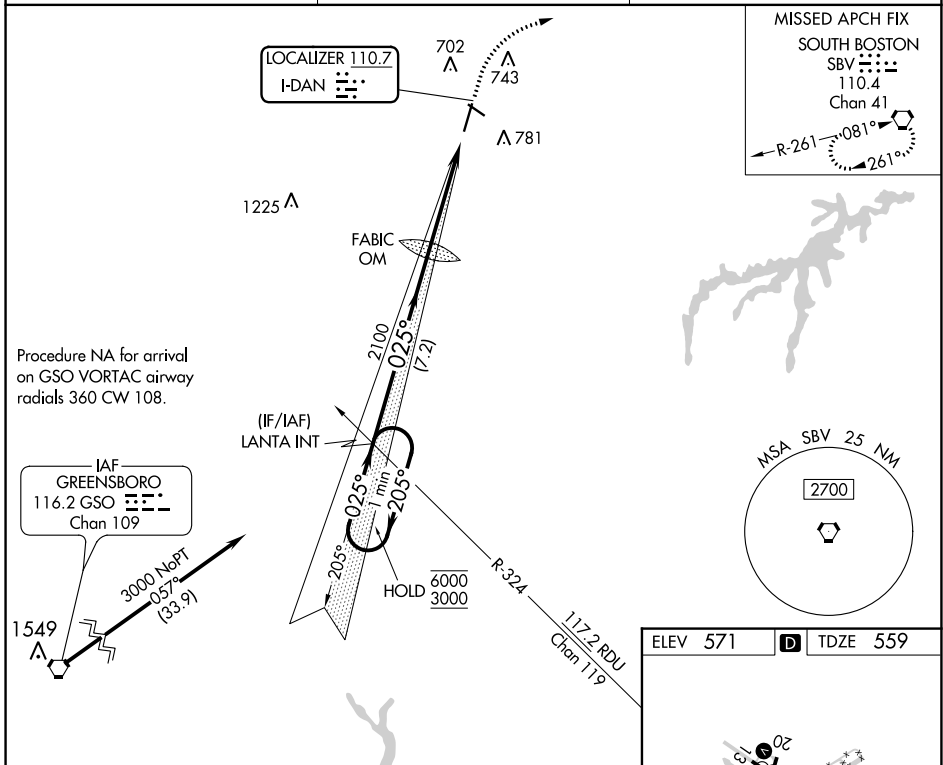
LOC I-DAN <b>110.7</b>	APP CRS <b>025°</b>	Rwy Idg TDZE Apt Elev	<b>5600</b> <b>559</b> <b>571</b>
---------------------------	------------------------	-----------------------------	-----------------------------------------

# ILS or LOC RWY 2

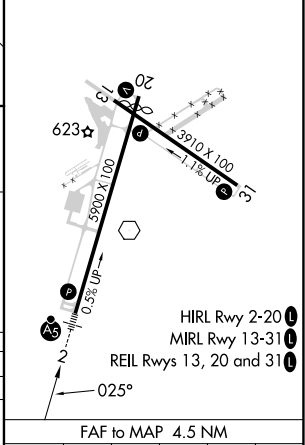
DANVILLE RGNL (DAN)

<p>For inop ALS, increase S-LOC 2 Cat C/D visibility to 1 3/8 SM.</p>	<p>MALSR</p>	<p>MISSED APPROACH: Climb to 2000 then climbing right turn to 3000 direct SBV VORTAC and hold.</p>

ASOS <b>128.125</b>	WASHINGTON CENTER <b>124.05 352.0</b>	UNICOM <b>123.05 (CTAF)</b>
------------------------	------------------------------------------	--------------------------------



ELEV 571	<b>D</b>	TDZE 559
----------	----------	----------



CATEGORY	A	B	C	D
S-ILS 2		759-1/2	200 (200-1/2)	
S-LOC 2	1020-1/2	461 (500-1/2)	1020-1	461 (500-1)
CIRCLING	1120-1	549 (600-1)	1120-1 1/2	1200-2
			549 (600-1 1/2)	629 (700-2)

Knots	60	90	120	150	180
Min:Sec	4:30	3:00	2:15	1:48	1:30

NE-3, 13 JUN 2024 to 11 JUL 2024

NE-3, 13 JUN 2024 to 11 JUL 2024