

DANVILLE, VIRGINIA

AL-599 (FAA)

22363

WAAS CH 93631 W31A	APP CRS 314°	Rwy Idg 3910
		TDZE 561
		Apr Elev 571

RNAV (GPS) RWY 31

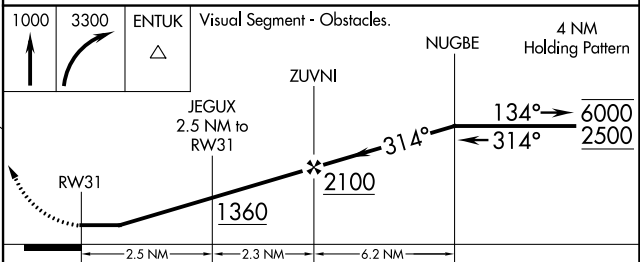
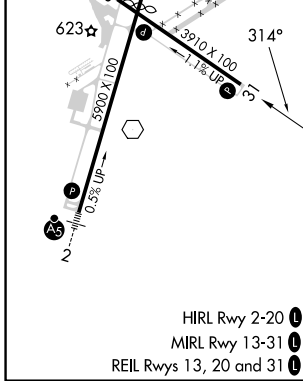
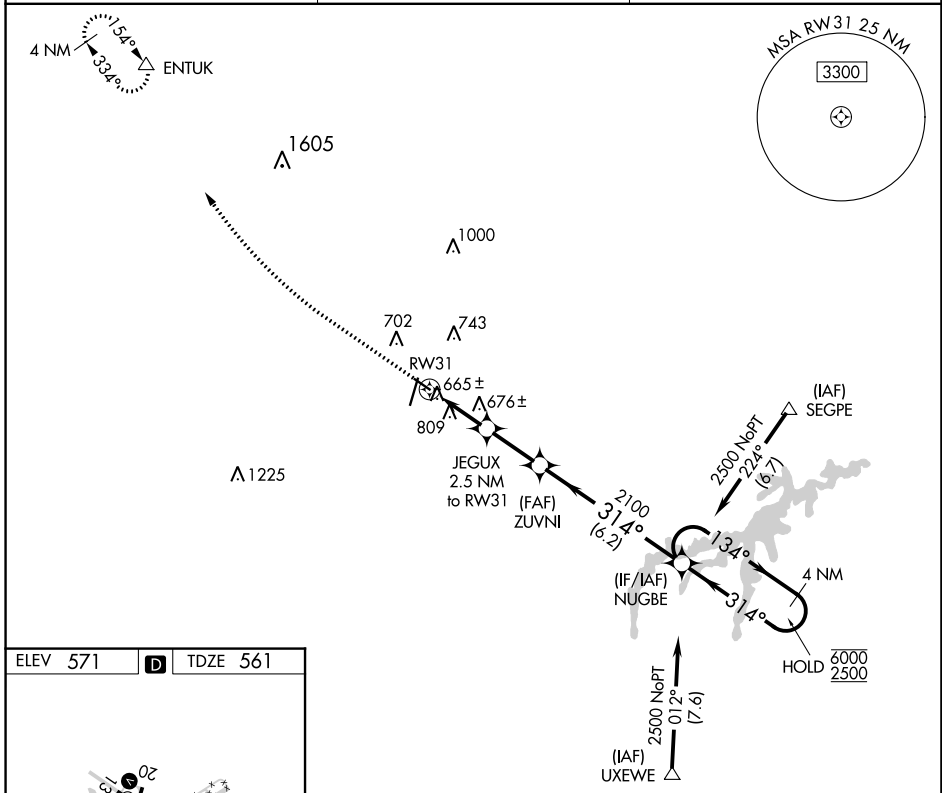
DANVILLE RGNL (DAN)

RNP APCH.

▽ Rwy 31 helicopter visibility reduction below 3/4 SM NA.

MISSED APPROACH: Climb to 1000 then climbing right turn to 3300 direct ENTUK and hold.

ASOS 128.125	WASHINGTON CENTER 124.05 352.0	UNICOM 123.05 (CTAF)
------------------------	--	--------------------------------



CATEGORY	A	B	C	D
LP MDA	920-1	359 (400-1)		NA
LNVA MDA	1060-1	499 (500-1)		NA

NE-3, 13 JUN 2024 to 11 JUL 2024

NE-3, 13 JUN 2024 to 11 JUL 2024

DANVILLE, VIRGINIA
Amdt 1 10SEP20

36°34'N-79°20'W

DANVILLE RGNL (DAN) RNAV (GPS) RWY 31