

LOM BW	APP CRS	Rwy Idg	6500
236	034°	TDZE	547
		Apt Elev	547

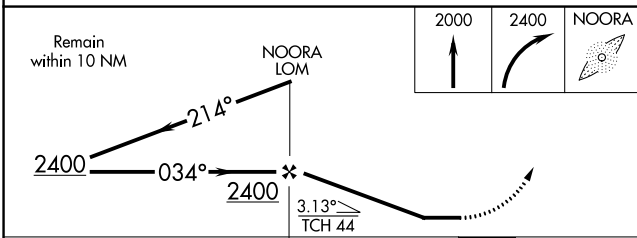
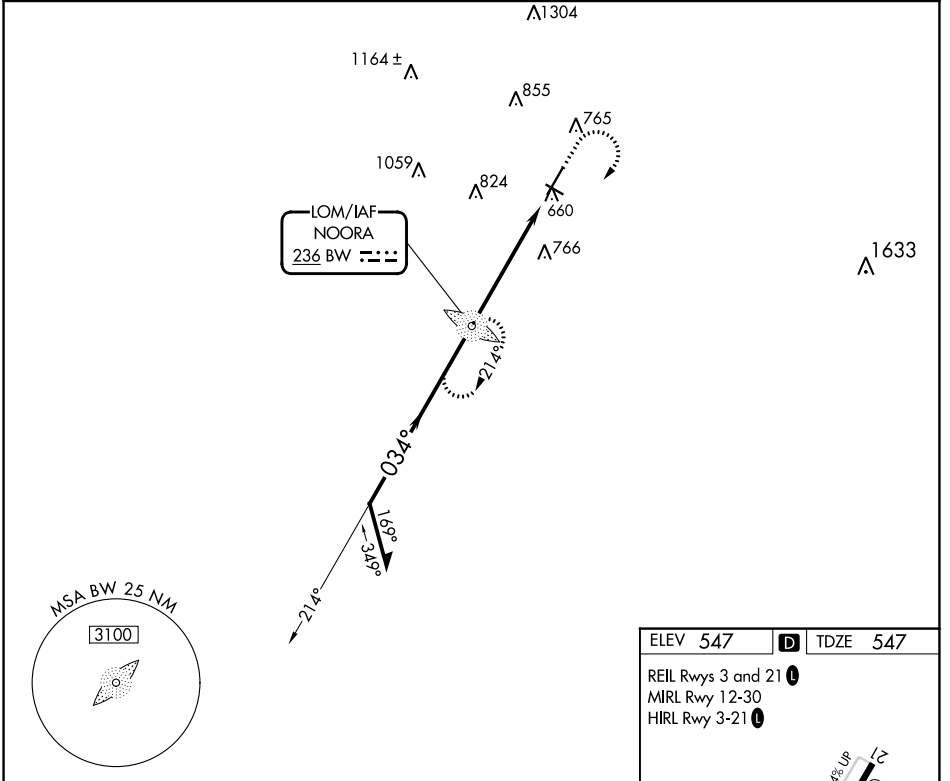
NDB RWY 3

BOWLING GREEN-WARREN COUNTY RGNL (BWG)

▽ **▲ NA** Circling to Rwy 30 NA at night.

MISSED APPROACH: Climb to 2000 then climbing right turn to 2400 direct NOORA LOM and hold.

ASOS 127.825	MEMPHIS CENTER 133.85 317.6	UNICOM 123.0 (CTAF) ①
------------------------	---------------------------------------	---------------------------------



ELEV 547 **D** TDZE 547

REIL Rwy 3 and 21 ①

MIRL Rwy 12-30

HIRL Rwy 3-21 ①

21 ①

12 ②

3 ③

0.8% Up

6507 x 1.50

3955 x 1.50

0.3%

0.3%

034°

FAF to MAP 5.4 NM

Knots	60	90	120	150	180
Min:Sec	5:24	3:36	2:42	2:10	1:48

CATEGORY	A	B	C	D
S-3	1120-1	573 (600-1)	1120-1 $\frac{5}{8}$	573 (600-1 $\frac{5}{8}$)
C CIRCLING	1120-1	573 (600-1)	1160-1 $\frac{3}{4}$	1200-2
			613 (700-1 $\frac{3}{4}$)	653 (700-2)

SE-1, 13 JUN 2024 to 11 JUL 2024

SE-1, 13 JUN 2024 to 11 JUL 2024