

24081  
**AIRPORT DIAGRAM**

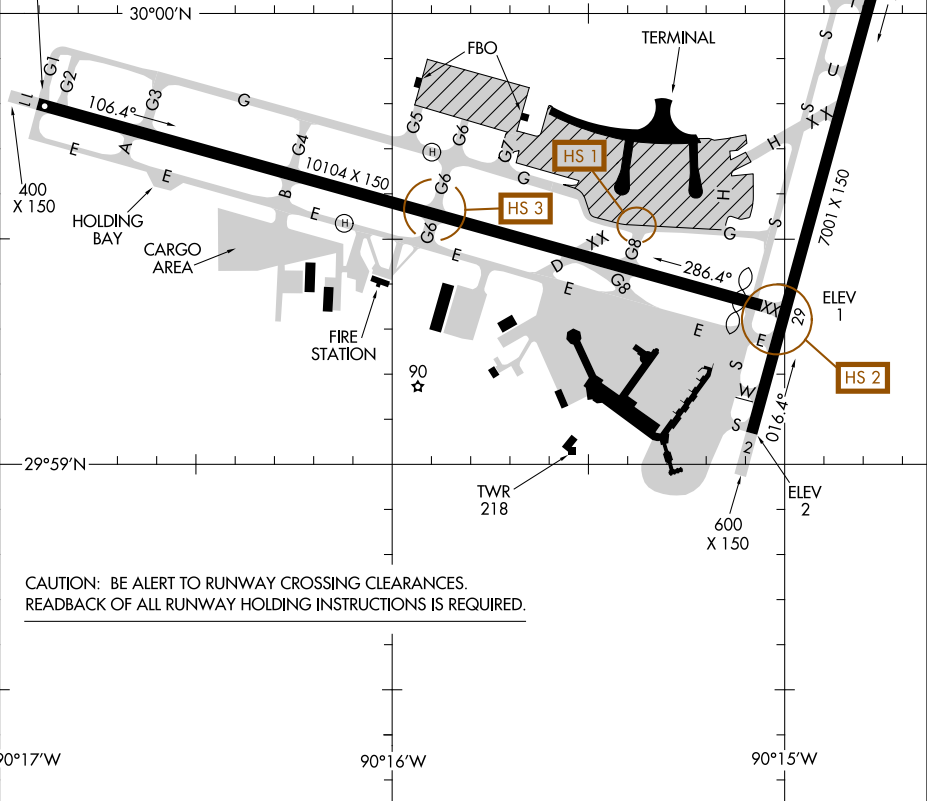
**LOUIS ARMSTRONG NEW ORLEANS INTL (MSY)**  
 AL-609 (FAA) NEW ORLEANS, LOUISIANA

D-ATIS  
 127.55  
 NEW ORLEANS TOWER  
 119.5 254.3  
 GND CON 121.9 273.525  
 CLNC DEL 120.925  
 CPDLC  
 PDC

RWY 02-20  
 PCN 64 R/C/W/T  
 S-75, D-180, 2D-380  
 RWY 11-29  
 PCN 123 R/C/W/T  
 S-75, D-180, 2D-380

ASSC in use. Operate transponders with altitude reporting mode and ADS-B (if equipped) enabled on all airport surfaces.

FIELD ELEV 4



CAUTION: BE ALERT TO RUNWAY CROSSING CLEARANCES. READBACK OF ALL RUNWAY HOLDING INSTRUCTIONS IS REQUIRED.

**AIRPORT DIAGRAM**  
 24081

NEW ORLEANS, LOUISIANA  
**LOUIS ARMSTRONG NEW ORLEANS INTL (MSY)**

SC-4, 13 JUN 2024 to 11 JUL 2024

SC-4, 13 JUN 2024 to 11 JUL 2024