

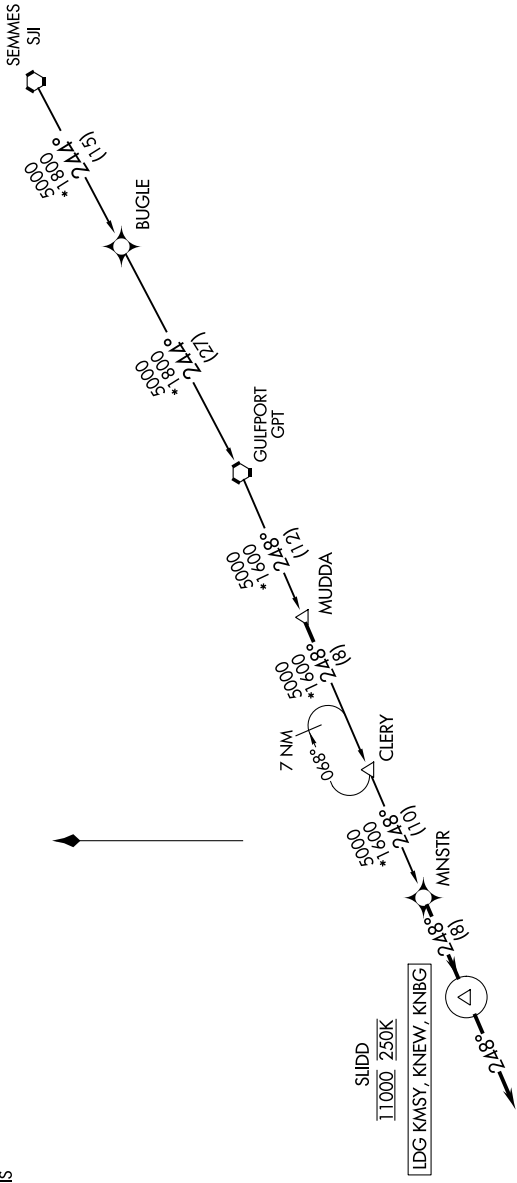
# MNSTR ONE ARRIVAL (RNAV)

NEW ORLEANS, LOUISIANA

SC-4, 13 JUN 2024 to 11 JUL 2024

NEW ORLEANS APP CON  
 125.5 350.35 (WEST)  
 133.15 290.3 (EAST)  
 KNBG ATIS  
 279.55  
 MSY D-ATIS  
 127.55  
 NEW ATIS  
 124.9

RNAV 1 - DME/DME/IRU or GPS.  
 RADAR required.



SLIDD  
 11000 2500

[LDG KMSY, KNEW, KNBG]

LAKEFRONT  
 LOUIS ARMSTRONG  
 NEW ORLEANS INTL  
 NEW ORLEANS NAS JRB  
 (ALVIN CALLENDER FLD)

ARRIVAL ROUTE DESCRIPTION  
 GULFPORT TRANSITION (GPT.MNSTR1)  
 SEMMES TRANSITION (SIJ.MNSTR1)

LANDING ALL AIRPORTS: From MNSTR on track 248° to cross SLIDD at 11000 and at 250K. Expect RADAR vectors to final approach course.

NOTE: Chart not to scale.

# MNSTR ONE ARRIVAL (RNAV)

NEW ORLEANS, LOUISIANA

SC-4, 13 JUN 2024 to 11 JUL 2024