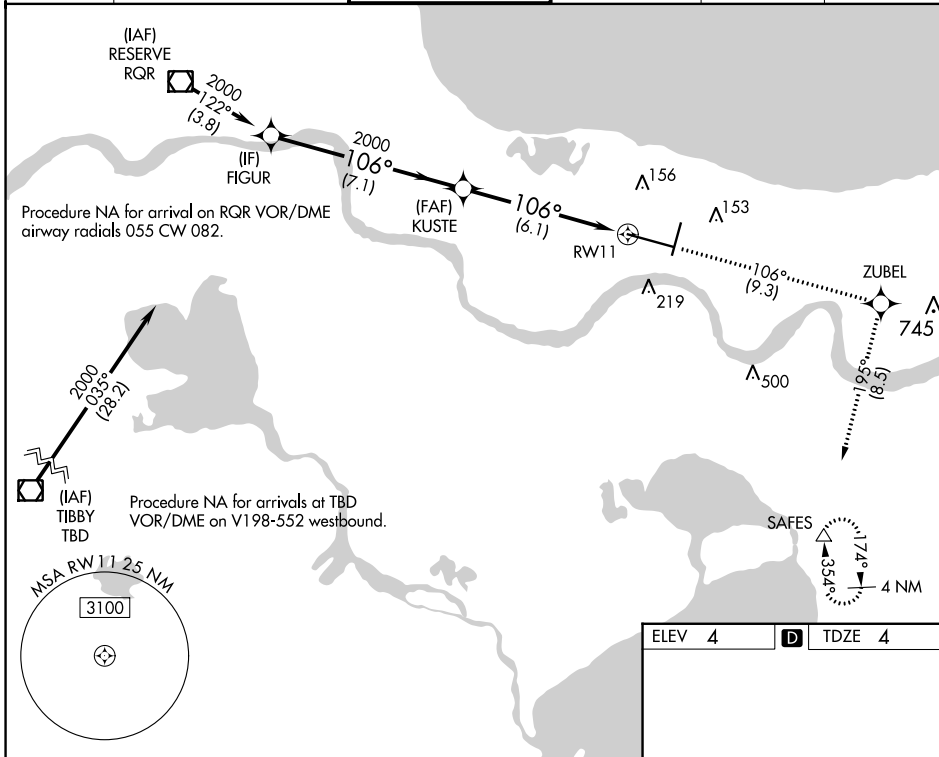


APP CRS	Rwy Idg	9800
106°	TDZE	4
	Apt Elev	4

RNAV (RNP) Z RWY 11

LOUIS ARMSTRONG NEW ORLEANS INTL (MSY)

RNP AR APCH - GPS.		ALSF-2		MISSED APPROACH: Climb to 2000 on track 106° to ZUBEL and on track 195° to SAFES and hold.	
<p>▼ For uncompensated Baro-VNAV systems, procedure NA below -1°C or above 54°C. For inop ALS, increase RNP 0.30 all Cats visibility to RVR 5500.</p>					
D-ATIS	NEW ORLEANS APP CON	NEW ORLEANS TOWER	GND CON	CLNC DEL	CPDLC
127.55	WEST 125.5 350.35 EAST 133.15 290.3	119.5 254.3	121.9 273.525	120.925	



SC-4, 13 JUN 2024 to 11 JUL 2024

SC-4, 13 JUN 2024 to 11 JUL 2024

ELEV 4		D TDZE 4								
		<table border="1"> <tr> <td>2000</td> <td>↑</td> <td>tr 106°</td> <td>ZUBEL</td> <td>↑</td> <td>tr 195°</td> <td>SAFES</td> </tr> </table>		2000	↑	tr 106°	ZUBEL	↑	tr 195°	SAFES
2000	↑	tr 106°	ZUBEL	↑	tr 195°	SAFES				
<p>FIGUR</p> <p>2000</p> <p>106°</p> <p>2000</p> <p>7.1 NM</p> <p>6.1 NM</p> <p>RWY 11</p> <p>GP 3.00° TCH 55</p>										
CATEGORY	A	B	C	D						
RNP 0.30 DA	367/35		363 (400- $\frac{5}{8}$)							
AUTHORIZATION REQUIRED										
NEW ORLEANS, LOUISIANA		LOUIS ARMSTRONG NEW ORLEANS INTL (MSY)								
Amdt 1B 14JUL22		30°00'N-90°16'W								
		RNAV (RNP) Z RWY 11								

RLS Rwy 2
TDZ/CL Rwy 11
HIRL All Runways