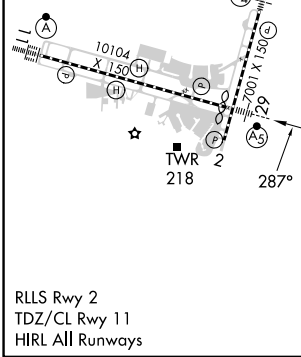
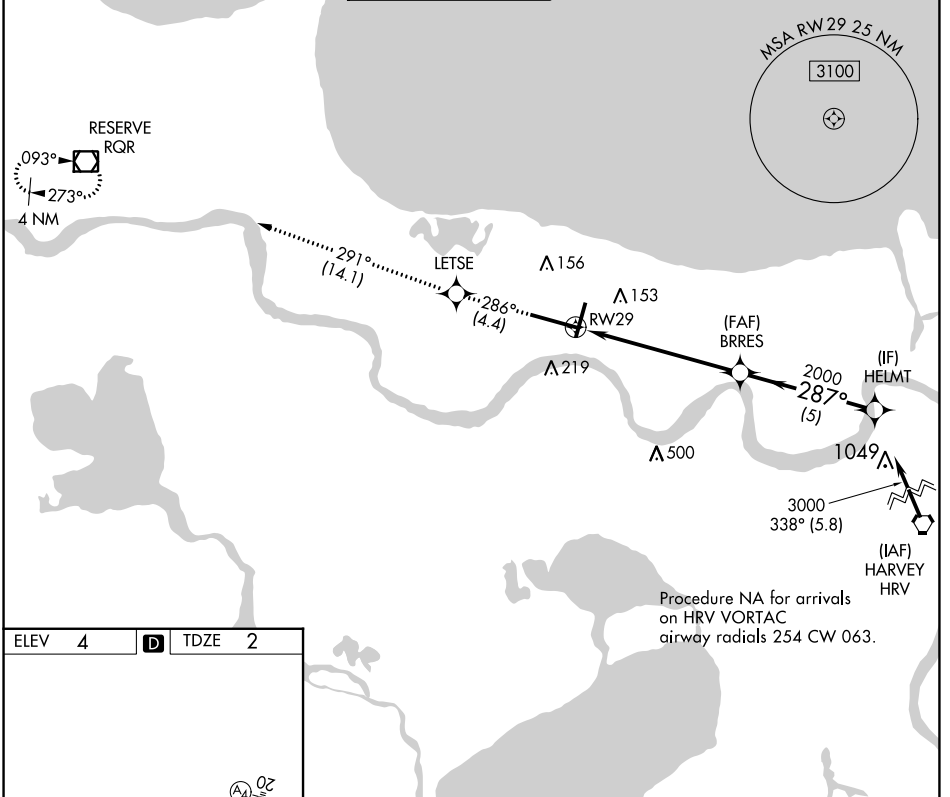


APP CRS	Rwy Idg	<b>9800</b>
<b>287°</b>	TDZE	<b>2</b>
	Apt Elev	<b>4</b>

# RNAV (RNP) Z RWY 29

LOUIS ARMSTRONG NEW ORLEANS INTL (MSY)

<p>▼ For uncompensated Baro-VNAV systems, procedure NA below -1°C (31°F) or above 54°C (130°F). GPS Required.</p>		<p>MALSRL</p>	<p>MISSED APPROACH: Climb to 3000 on track 286° to LETSE and on track 291° to RQR VOR/DME and hold.</p>		
D-ATIS	NEW ORLEANS APP CON	NEW ORLEANS TOWER	GND CON	CLNC DEL	CPDLC
<b>127.55</b>	WEST <b>125.5 350.35</b> EAST <b>133.15 290.3</b>	<b>119.5 254.3</b>	<b>121.9 273.525</b>	<b>120.925</b>	



3000	↑	tr 286°	LETSE	tr 291°	RQR	VGSI and RNAV glidepath not coincident (VGSI Angle 3.00/TCH 68).
						HELMT 3000
						GP 3.00° TCH 53
						6.1 NM 5 NM
CATEGORY	A	B	C	D		
RNP 0.30 DA	382/40			380 (400-¾)		
<b>AUTHORIZATION REQUIRED</b>						

SC-4, 13 JUN 2024 to 11 JUL 2024

SC-4, 13 JUN 2024 to 11 JUL 2024