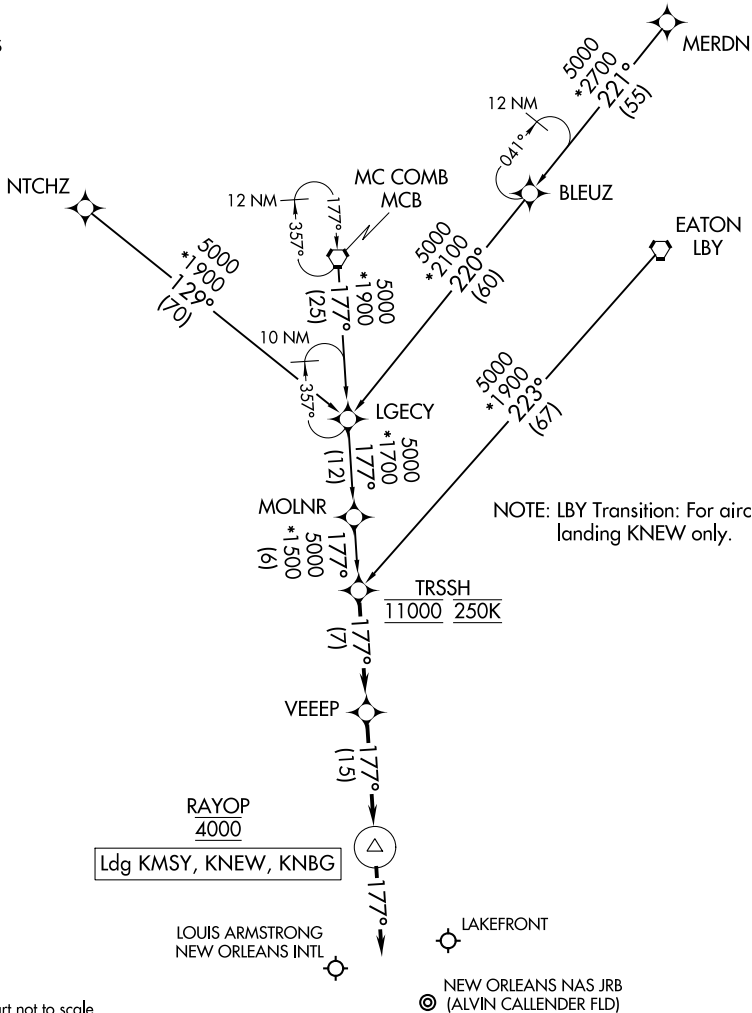


# TRSSH ONE ARRIVAL (RNAV)

NEW ORLEANS, LOUISIANA

NEW ORLEANS APP CON  
 125.5 350.35 (WEST)  
 133.15 290.3 (EAST)  
 KNBG ATIS  
 279.55  
 MSY D-ATIS  
 127.55  
 NEW ATIS  
 124.9

RNAV 1 - DME/DME/IRU or GPS.  
 RADAR required.



NOTE: Chart not to scale.

## ARRIVAL ROUTE DESCRIPTION

- EATON TRANSITION (LBY.TRSSH1)
- MC COMB TRANSITION (MCB.TRSSH1)
- MERDN TRANSITION (MERDN.TRSSH1)
- NTCHZ TRANSITION (NTCHZ.TRSSH1)

LANDING KMSY/KNBG/KNEW: From TRSSH on track 177° to VEEEP, then on track 177° to cross RAYOP at 4000, then on track 177°. Expect RADAR vectors to final approach course.

# TRSSH ONE ARRIVAL (RNAV)

NEW ORLEANS, LOUISIANA

SC-4, 13 JUN 2024 to 11 JUL 2024

SC-4, 13 JUN 2024 to 11 JUL 2024