

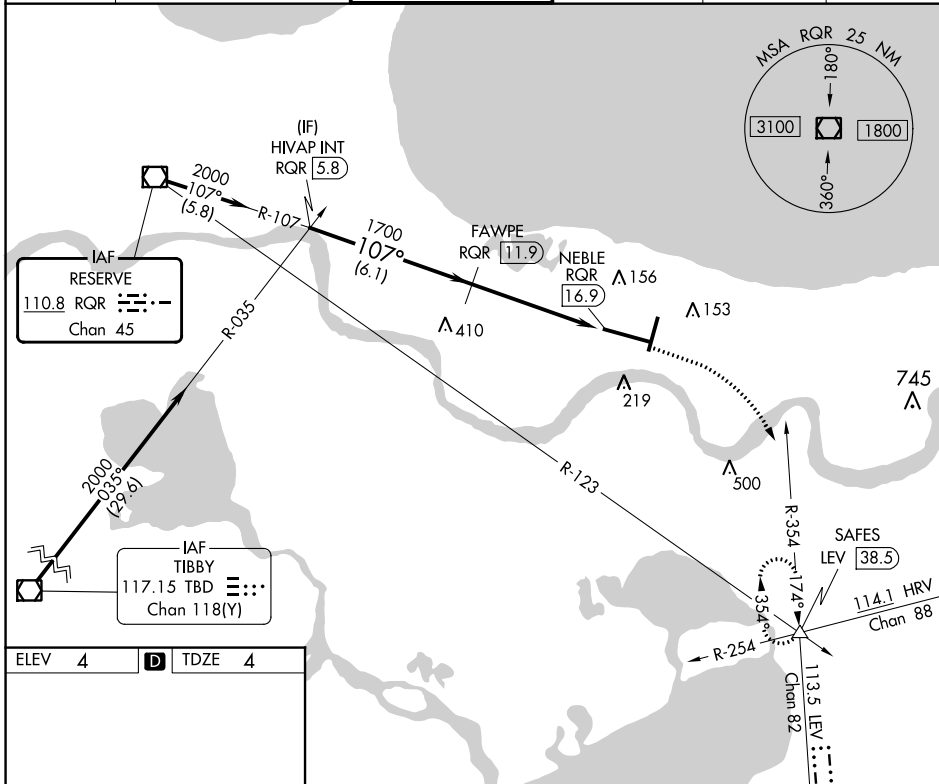
VOR/DME RQR	APP CRS	Rwy Idg	9800
110.8	107°	TDZE	4
Chan 45		Apt Elev	4

VOR/DME RWY 11

LOUIS ARMSTRONG NEW ORLEANS INTL (MSY)

	MISSED APPROACH: Climb to 800 then climbing right turn to 2000 on heading 130° and LEV VORTAC R-354 to SAFES INT/LEV 38.5 DME and hold.		

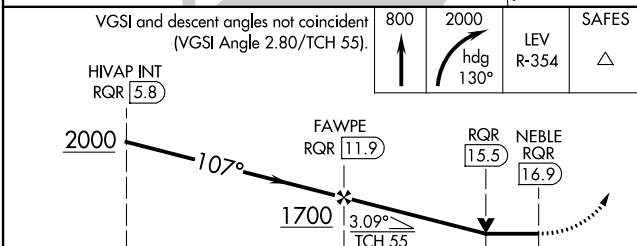
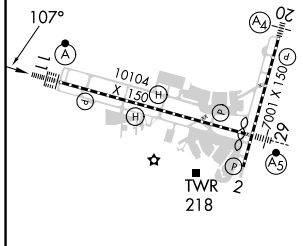
D-ATIS	NEW ORLEANS APP CON	NEW ORLEANS TOWER	GND CON	CLNC DEL	CPDLC
127.55	WEST 125.5 350.35 EAST 133.15 290.3	119.5 254.3	121.9 273.525	120.925	



SC-4, 13 JUN 2024 to 11 JUL 2024

SC-4, 13 JUN 2024 to 11 JUL 2024

ELEV 4	D	TDZE 4
--------	---	--------



CATEGORY	A	B	C	D
S-11	460/24 456 (500-1/2)			
CIRCLING	520-1	516 (600-1)	580-1 1/2 576 (600-1 1/2)	600-2 596 (600-2)

RLLS Rwy 2
TDZ/CL Rwy 11
HIRL All Runways

NEW ORLEANS, LOUISIANA
Amdt 1A 21JUL16

LOUIS ARMSTRONG NEW ORLEANS INTL (MSY)

30°00'N-90°16'W

VOR/DME RWY 11