

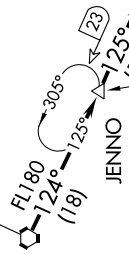
# LENDY EIGHT ARRIVAL

NEW YORK, NEW YORK

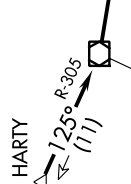
NE-2, 13 JUN 2024 to 11 JUL 2024

NEW YORK APP CON  
 128.125 269.0  
 FRG ATIS  
 126.65  
 JFK D-ATIS  
 128.725 (ARR/DEP)  
 117.7 (ARR-NE)  
 115.4 (ARR-SW)

WILKES-BARRE  
 111.6 LVZ  
 Chan 53



JENNO  
 Expect FL230



HARTY  
 Expect FL305

### LENDY TURBOJET VERTICAL NAVIGATION PLANNING INFORMATION

Expect FL190 and 250K

FL180  
 109°  
 (34)

STILLWATER  
 109.6 STW  
 Chan 33



STILLWATER  
 109.6 STW  
 Chan 33

FL180  
 109°  
 (34)

Expect FL190 and 250K

Expect FL190 and 250K

LA GUARDIA  
 113.1 LGA  
 Chan 78



JOHN F KENNEDY INTL

REPUBLIC

N

NOTE: STAR applicable to Turbojet and Turboprop aircraft capable of operating at 250K or greater at FL190.  
 NOTE: DME required.  
 NOTE: RADAR required.

### ARRIVAL ROUTE DESCRIPTION

From over LVZ VORTAC on LVZ R-124 to JENNO INT, then on STW R-305 to HARTY INT, then on STW R-305 to STW VOR/DME, then on STW R-109 to LENDY, then on LGA R-315 to LGA VOR/DME. Expect RADAR vectors to final approach course after LGA VOR/DME.

NOTE: Chart not to scale.

# LENDY EIGHT ARRIVAL

NEW YORK, NEW YORK

NE-2, 13 JUN 2024 to 11 JUL 2024