

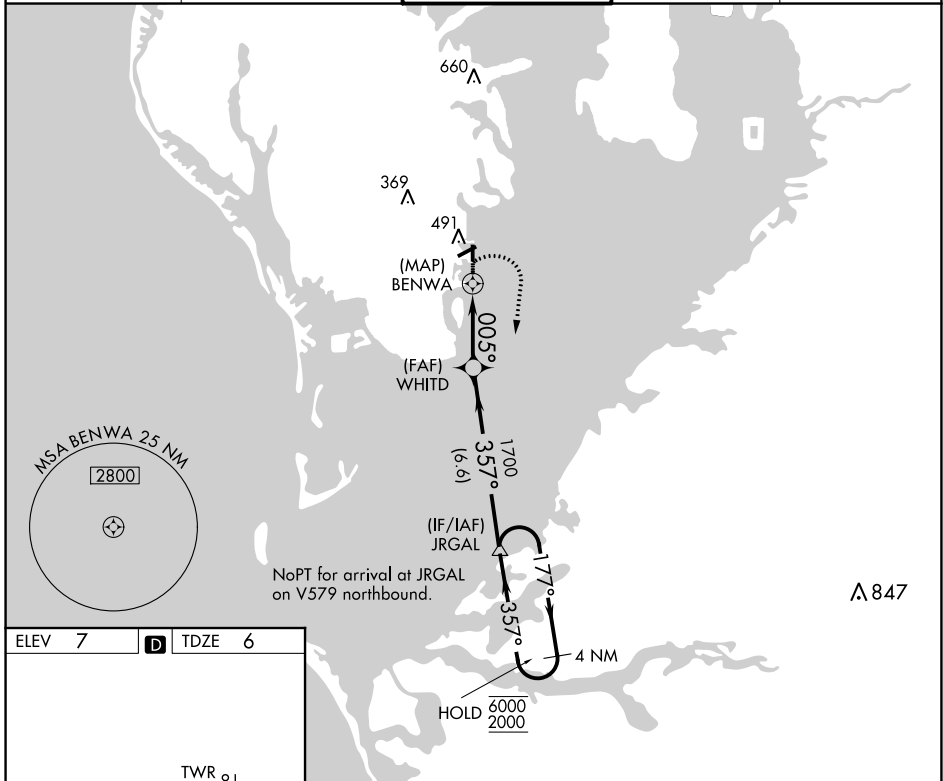
APP CRS 005°	Rwy Idg TDZE Apt Elev	2749 6 7
------------------------	-----------------------------	-------------------------------------

RNAV (GPS) RWY 36

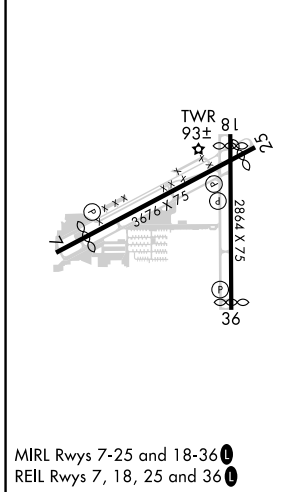
ALBERT WHITTED (SPG)

RNP APCH - GPS.	MISSED APPROACH: Climbing right turn to 2000 direct JRGAL and hold.
<p>▼ Circling NA northwest of Rwy 7 and 18. Procedure NA at night.</p> <p>▲ Rwy 36 helicopter visibility reduction below 1 SM NA.</p>	

ASOS 118.875	TAMPA APP CON 119.65 316.05 (EAST) 125.3 316.05 (WEST)	WHITTED TOWER ★ 127.4 (CTAF) 0 257.6	GND CON 121.8	UNICOM 122.95
------------------------	--	--	-------------------------	-------------------------



ELEV 7	D	TDZE 6
--------	----------	--------



2000	JRGAL	4 NM Holding Pattern		
BENWA	WHITD	JRGAL		
005°	357°	177°		
0.9	3 NM	6.6 NM		
4.00°	TCH 45			
CATEGORY	A	B	C	D
LNAV MDA	540-1½	534 (600-1½)		NA
C CIRCLING	540-1¼	533 (600-1¼)		NA

SE-3, 13 JUN 2024 to 11 JUL 2024

SE-3, 13 JUN 2024 to 11 JUL 2024