

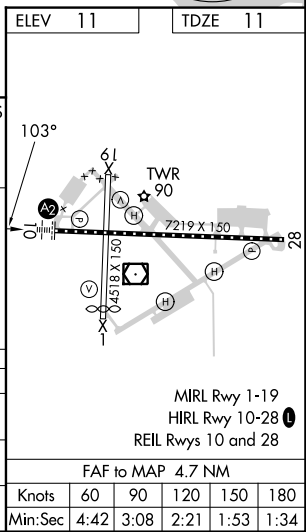
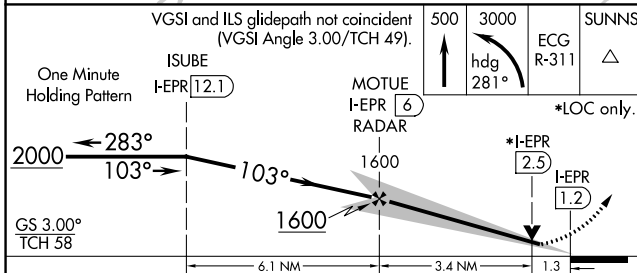
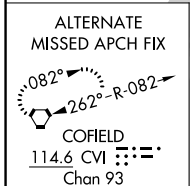
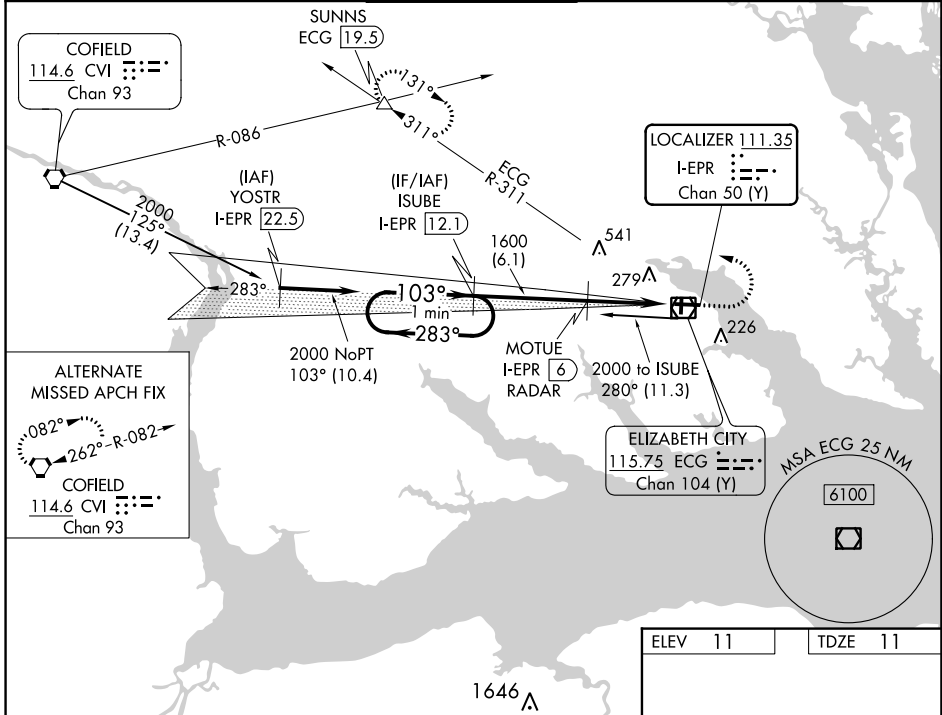
LOC/DME I-EPR <b>111.35</b> Chan <b>50 (Y)</b>	APP CRS <b>103°</b>	Rwy Idg <b>7219</b> TDZE <b>11</b> Apt Elev <b>11</b>
--	------------------------	---

# ILS or LOC RWY 10

ELIZABETH CITY CG AIR STATION/RGNL (ECG)

DME required.	SALS 	MISSED APPROACH: Climb to 500 then climbing left turn to 3000 on heading 281° and ECG VOR/DME R-311 to SUNNS INT/ECG 19.5 DME and hold.
---------------	----------	---

ASOS <b>124.375</b>	NORFOLK APP CON <b>119.55 269.425</b>	ELIZABETH CITY TOWER ★ <b>120.5 (CTAF) 355.6</b>	GND CON <b>121.9</b>	UNICOM <b>122.95</b>
------------------------	--	---	-------------------------	-------------------------



CATEGORY	A	B	C	D
S-ILS 10	261- <sup>3</sup> / <sub>4</sub>		250 (300- <sup>3</sup> / <sub>4</sub> )	
S-LOC 10	460-1 449 (500-1)		460-1 <sup>3</sup> / <sub>8</sub> 449 (500-1 <sup>3</sup> / <sub>8</sub> )	
CIRCLING	480-1 469 (500-1)		640-1 <sup>1</sup> / <sub>4</sub> 629 (700-1 <sup>3</sup> / <sub>4</sub> ) 640-2 629 (700-2)	

SE-2, 13 JUN 2024 to 11 JUL 2024

SE-2, 13 JUN 2024 to 11 JUL 2024