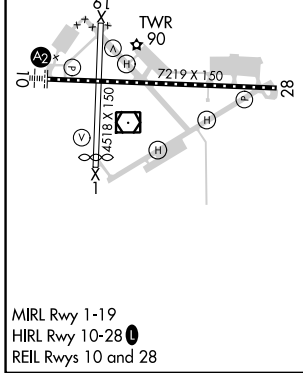
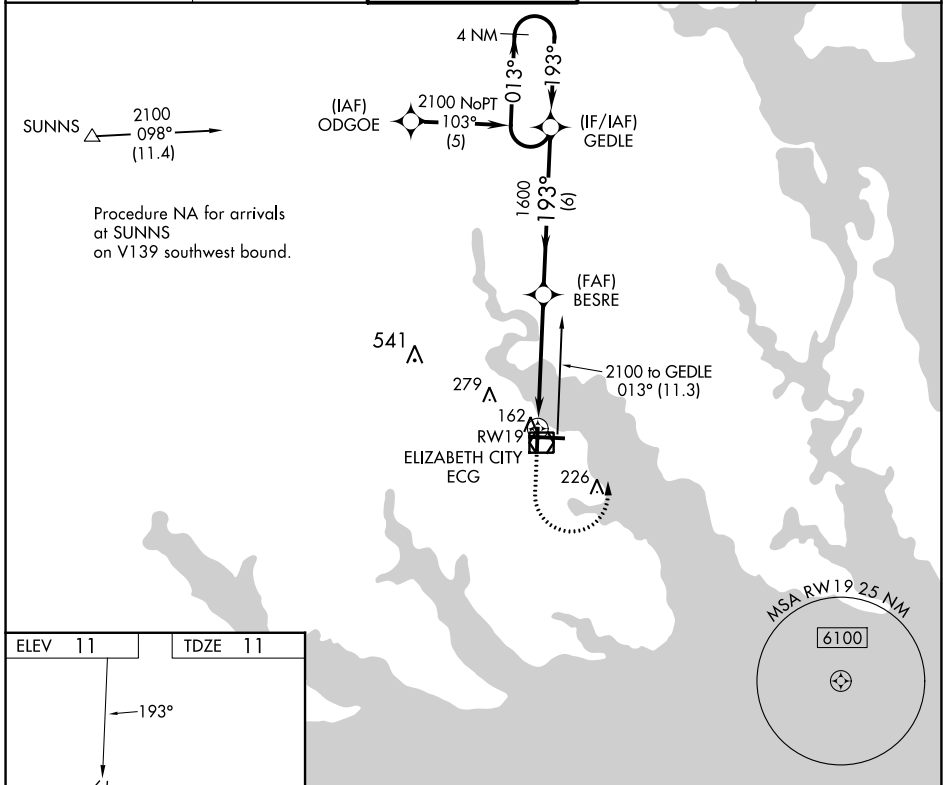


APP CRS	Rwy Idg	4518
193°	TDZE	11
	Apt Elev	11

RNAV (GPS) RWY 19

ELIZABETH CITY CG AIR STATION/RGNL (ECG)

RNP APCH.		MISSED APPROACH: Climb to 900 then climbing left turn to 2100 direct GEDLE and hold.		
ASOS	NORFOLK APP CON	ELIZABETH CITY TOWER★	GND CON	UNICOM
124.375	119.55 269.425	120.5 (CTAF) 355.6	121.9	122.95



ELEV 11	TDZE 11	900		2100	GEDLE	VGS1 and descent angles not coincident (VGS1 Angle 2.75/TCH 30).		4 NM
		↑		↙	✦			Holding Pattern
		1.5 NM to RWY 19		BESRE	GEDLE	1600		013° → 2100
		3.04° TCH 45		193°		← 193°		
		1.5		3.3 NM		6 NM		
CATEGORY	A	B	C	D				
LNAV MDA	480-1	469 (500-1)	480-1 ³ / ₈	469 (500-1 ³ / ₈)				
C CIRCLING	480-1	469 (500-1)	640-1 ³ / ₄	629 (700-1 ³ / ₄)	640-2	629 (700-2)		

SE-2, 13 JUN 2024 to 11 JUL 2024

SE-2, 13 JUN 2024 to 11 JUL 2024