

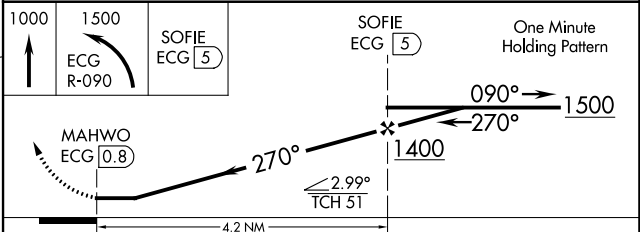
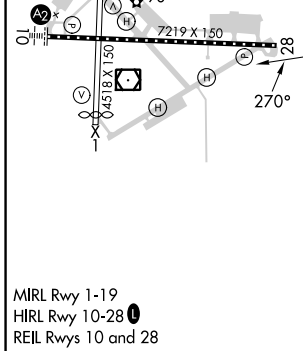
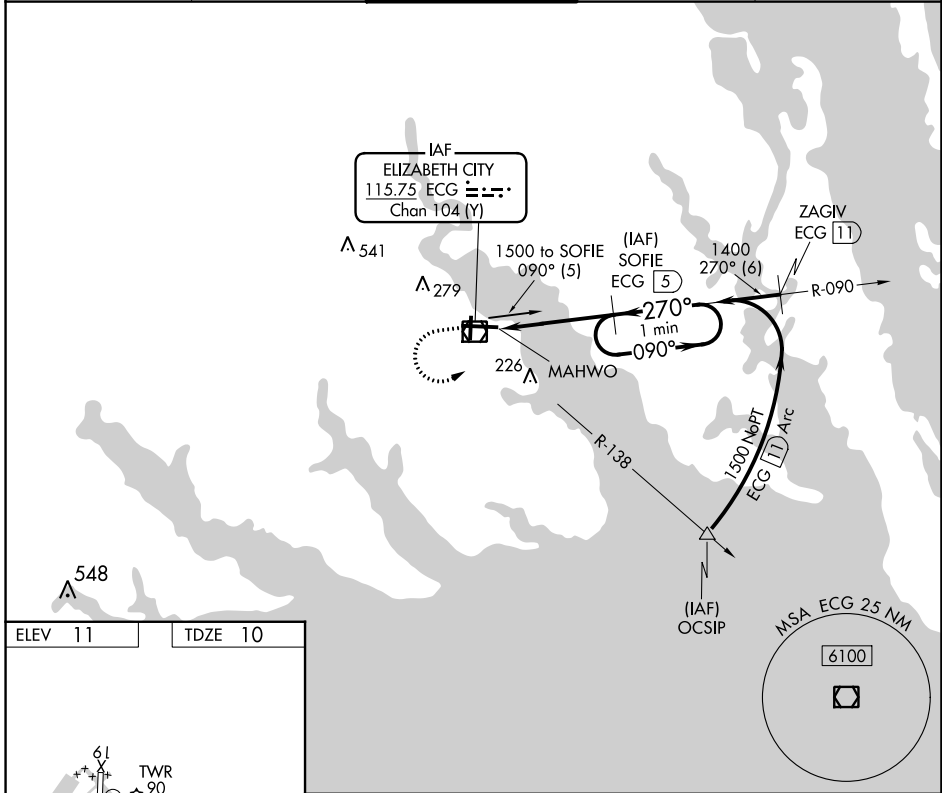
VOR/DME ECG 115.75 Chan 104 (Y)	APP CRS 270°	Rwy Idg 7219 TDZE 10 Apt Elev 11
--	------------------------	---

VOR/DME RWY 28
ELIZABETH CITY CG AIR STATION/RGNL (ECG)

Procedure NA when tethered balloon located approximately 2 miles southeast of airport is flying. When local altimeter setting not received, use Currituck altimeter setting and increase all MDAs 40 feet and S-28 visibility Cats C/D ½ SM. Rwy 28 helicopter visibility reduction below ¾ SM NA.

MISSED APPROACH: Climb to 1000 then climbing left turn to 1500 via ECG R-090 to SOFIE 5 DME and hold.

ASOS 124.375	NORFOLK APP CON 119.55 269,425	ELIZABETH CITY TOWER* 120.5 (CTAF) 355.6	GND CON 121.9	UNICOM 122.95
------------------------	--	--	-------------------------	-------------------------



CATEGORY	A	B	C	D
S-28	380-1	370 (400-1)		380-1¼ 370 (400-1¼)
C CIRCLING	480-1	469 (500-1)	640-1¾ 629 (700-1¾)	640-2 629 (700-2)

SE-2, 13 JUN 2024 to 11 JUL 2024

SE-2, 13 JUN 2024 to 11 JUL 2024