

WAAS CH 99514 W18A	APP CRS 185°	Rwy Idg TDZE 777 Apt Elev 782	7650
--	------------------------	---	-------------

RNAV (GPS) RWY 18

BISHOP INTL (F'NT)

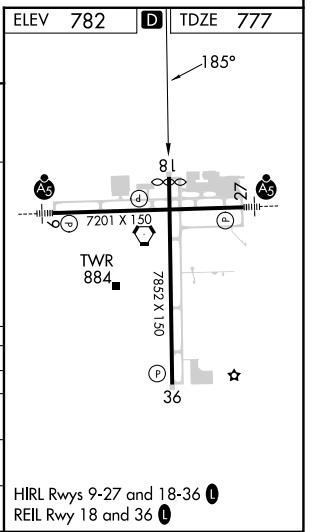
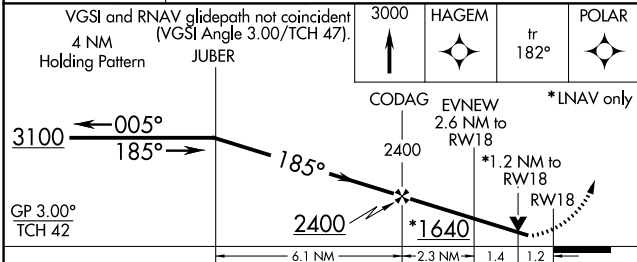
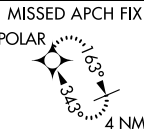
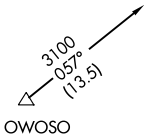
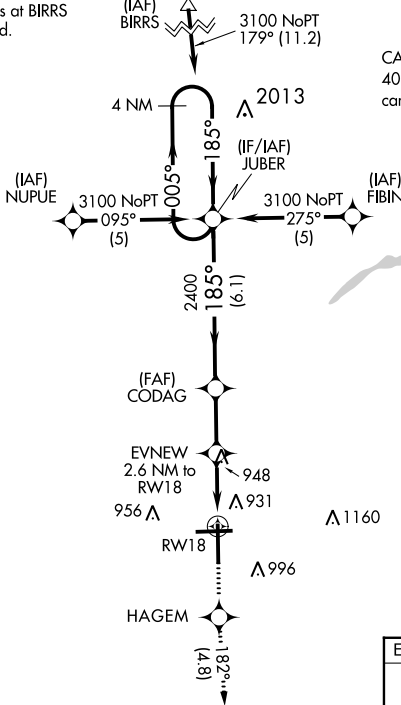
⚠ For uncompensated Baro-VNAV systems, LNAV/VNAV NA below -16°C (4°F) or above 47°C (116°F). DME/DME RNP-0.3 NA.
⚠ Rwy 18 helicopter visibility reduction below ¾ SM NA.

MISSED APPROACH: Climb to 3000 direct HAGEM and on track 182° to POLAR and hold.

ATIS 133.15	GREAT LAKES APP CON * 118.8 257.9	FLINT TOWER * 126.3 (CTAF) 0257.9	GND CON 121.9	CLNC DEL 121.75	UNICOM 122.95
-----------------------	---	---	-------------------------	---------------------------	-------------------------

Procedure NA for arrivals at BIRRS on V320 northwest bound.

CAUTION: Brightly lighted parking lot 4000' east of approach end of Rwy 27 can easily be confused for Rwy 27.



CATEGORY	A	B	C	D
LPV DA		1109-1¼	333 (400-1¼)	
LNAV/VNAV DA		1253-1¾	477 (500-1¾)	
LNAV MDA	1220-1	443 (500-1)	1220-1¾	443 (500-1¾)
CIRCLING	1300-1	518 (600-1)	1300-1½	1520-2¼
			518 (600-1½)	738 (800-2¼)

EC-1, 13 JUN 2024 to 11 JUL 2024

EC-1, 13 JUN 2024 to 11 JUL 2024