


WAAS CH <b>57928</b> <b>W13A</b>	APP CRS <b>129°</b>	Rwy Idg TDZE Apt Elev	<b>5099</b> <b>881</b> <b>881</b>
--	------------------------	-----------------------------	---

# RNAV (GPS) RWY 13

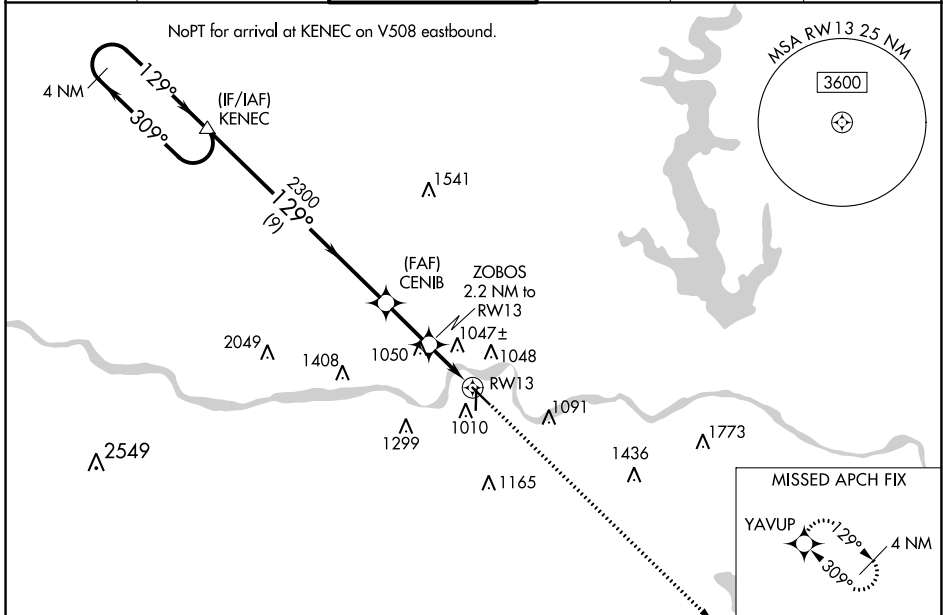
PHILIP BILLARD MUNI (TOP)

**▽** For uncompensated Baro-VNAV systems, LNAV/VNAV NA below -18°C (0°F) or above 54°C (130°F). DME/DME RNP-0.3 NA.  
For inop ALS, increase LNAV/VNAV all Cats visibility to ¾ SM and LNAV Cat C visibility to 1½ SM.

MALSR 

MISSED APPROACH: Climb to 3600 direct YAVUP and hold.

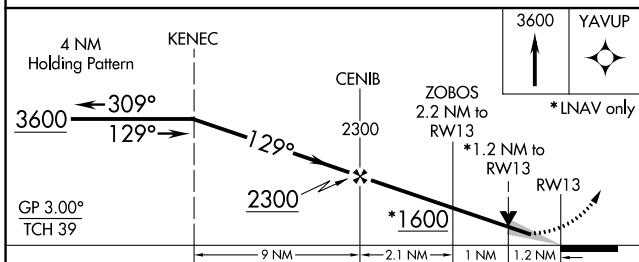
ASOS <b>121.275</b>	KANSAS CITY CENTER <b>123.8 343.7</b>	TOPEKA TOWER★ <b>118.7 (CTAF) 0 257.8</b>	GND CON <b>121.9</b>	CLNC DEL <b>121.9</b>	UNICOM <b>122.95</b>
------------------------	--	--	-------------------------	--------------------------	-------------------------



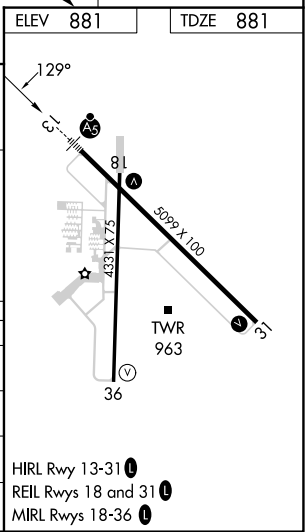
NC-2, 13 JUN 2024 to 11 JUL 2024

NC-2, 13 JUN 2024 to 11 JUL 2024

ELEV <b>881</b>	TDZE <b>881</b>
-----------------	-----------------



CATEGORY	A	B	C	D
LPV DA	1091-½	210 (300-½)		NA
LNAV/VNAV DA	1135-½	254 (300-½)		NA
LNAV MDA	1300-½	419 (500-½)	1300-¾ 419 (500-¾)	NA
<b>C</b> CIRCLING	1360-1 479 (500-1)	1440-1 559 (600-1)	1600-2 719 (800-2)	NA



HIRL Rwy 13-31 **0**  
REIL Rwy 18 and 31 **0**  
MIRL Rwy 18-36 **0**