

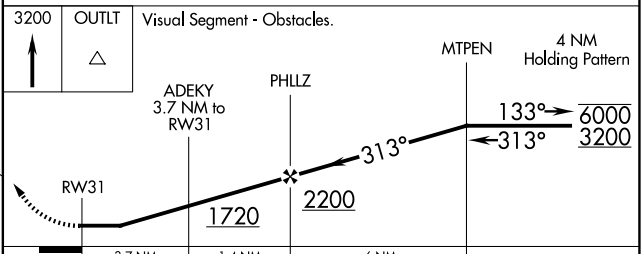
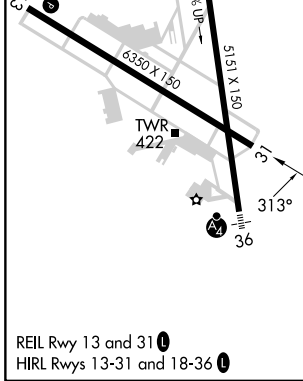
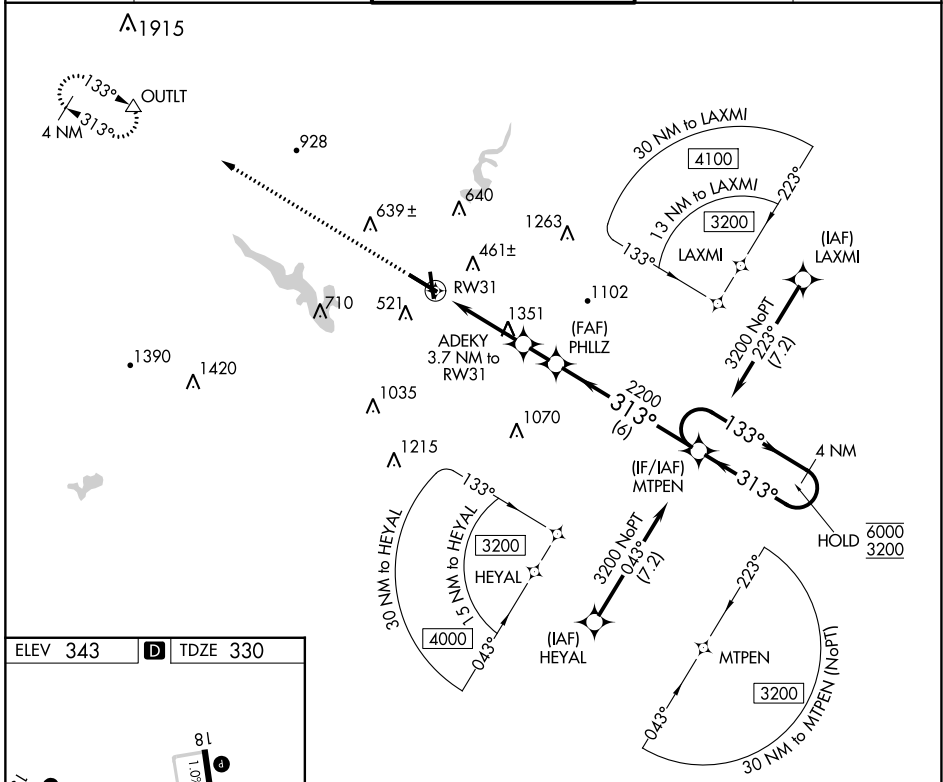
APP CRS 313°	Rwy Idg 6350
	TDZE 330
	Apt Elev 343

RNAV (GPS) RWY 31

READING RGNL/CARL A SPAATZ FLD (RDG)

RNP APCH - GPS.		MISSED APPROACH: Climb to 3200 direct OUTLT and hold.		
<p>▼ Rwy 31 helicopter visibility reduction below 1 SM NA. Straight-in and Circling Rwy 31 NA at night.</p>				

ATIS 127.1	READING APP CON * 125.15 257.9	READING TOWER * 119.9 (CTAF) 0 288.3	GND CON 121.9	UNICOM 122.95
----------------------	--	--	-------------------------	-------------------------



CATEGORY	A	B	C	D
LNAV MDA	1620-1¼ 1290 (1300-1¼)	1620-1½ 1290 (1300-1½)	1620-3	1290 (1300-3)
CIRCLING	1620-1¼ 1277 (1300-1¼)	1620-1½ 1277 (1300-1½)	1620-3 1277 (1300-3)	1660-3 1317 (1400-3)

NE-4, 13 JUN 2024 to 11 JUL 2024

NE-4, 13 JUN 2024 to 11 JUL 2024