

FORT SMITH, ARKANSAS

HI-VOR Y or TACAN Y RWY 26

VORTAC FSM 110.4 Chan 41	APCH CRS 225°	Rwy ldg TDZE Arpt Elev 9318 448 469
--	-------------------------	---

[USAF] FORT SMITH RGNL (EBBING FLD ANGB) (KFMS)

DME required



MISSED APPROACH: Climb to 4000 on FSM VORTAC R-232 to SPIRO (FSM R-232/15 DME) and hold, continue climb in hold to 4000.

* Circling not authorized for CAT E NW of Rwy 8 and Rwy 20.

ATIS 124.775	RAZORBACK APP CON * 120.9 343.75	TOWER * 118.3 (CTAF) 0 323.175	GND CON 121.9 275.8	CLNC DEL 133.85 278.3
------------------------	--	--	-------------------------------	---------------------------------

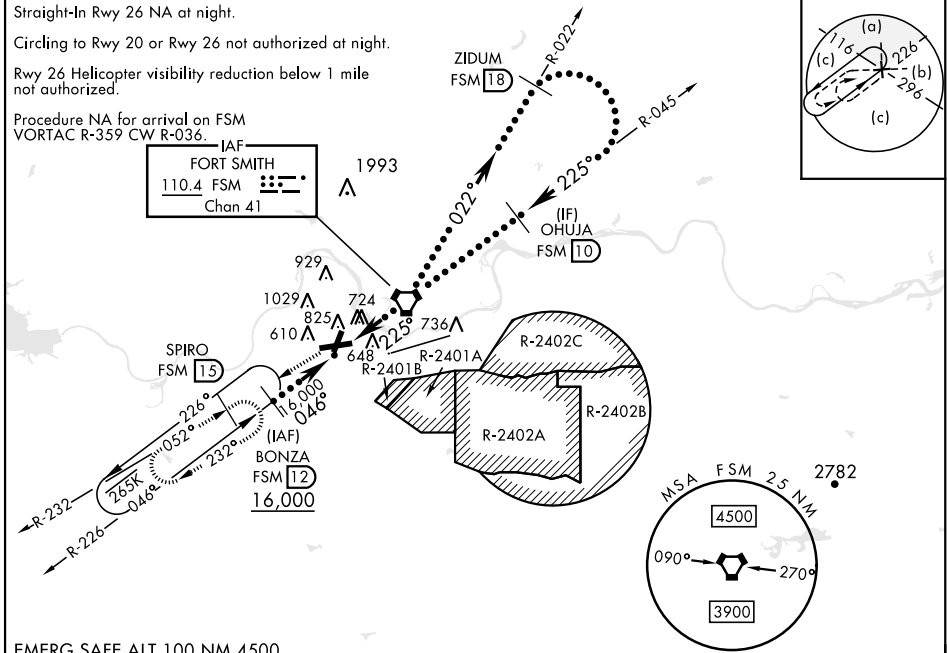
Straight-In Rwy 26 NA at night.

Circling to Rwy 20 or Rwy 26 not authorized at night.

Rwy 26 Helicopter visibility reduction below 1 mile not authorized.

Procedure NA for arrival on FSM VORTAC R-359 CW R-036.

IAF
FORT SMITH
110.4 FSM
Chan 41



EMERG SAFE ALT 100 NM 4500

CATEGORY	4000 ↑ FSM R-232		SPIRO FSM 15	ELEV	469	TDZE	448
	BONZA FSM 12		FSM VORTAC	618 Λ			
S-26	C	D	E	741 Λ			
CIRCLING *	1400-2 3/4 931 (1000-2 3/4)	1400-3 931 (1000-3)	1400-3 931 (1000-3)	500 Λ			
				583 Λ			
				HRL Rwy 8-26 MRL Rwy 2-20			

FORT SMITH, ARKANSAS 35°20'N-94°22'W FORT SMITH RGNL (EBBING FLD ANGB) (KFMS)

Amtd 9 25JAN24

HI-VOR Y or TACAN Y RWY 26

SC-1, 13 JUN 2024 to 11 JUL 2024

SC-1, 13 JUN 2024 to 11 JUL 2024