

LOC I-GKV <b>111.3</b>	APP CRS <b>080°</b>	Rwy Idg TDZE Apt Elev	<b>9318</b> <b>469</b> <b>469</b>
---------------------------	------------------------	-----------------------------	---

# ILS or LOC RWY 8

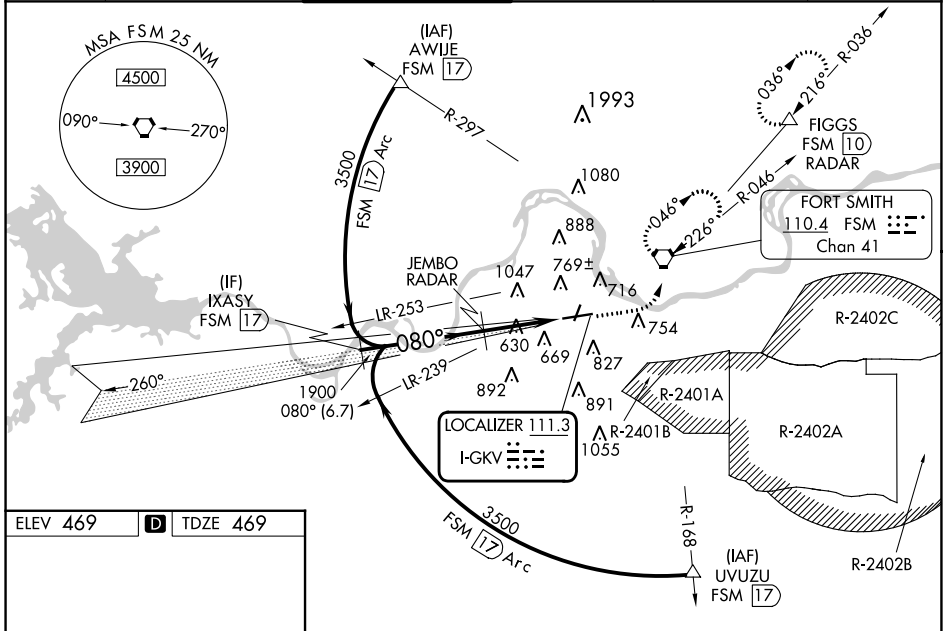
FORT SMITH RGNL (FSM)

DME and RADAR required.

**ASR**  
Circling NA for Cat E northwest of Rws 8 and 20. Circling Rwy 20, 26 NA at night. For inop ALS, increase S-ILS 8 Cat E visibility to 3/4 SM, increase S-LOC 8, Cat C/D/E visibility to 1 1/2 SM. Circling NA for Cat E when restricted area R-2401B active. DME from FSM VORTAC. DME use requires simultaneous reception of I-GKV and FSM DME.

**MALSR**  
MISSED APPROACH: Climb to 1000 then climbing left turn to 3300 direct FSM VORTAC and hold, continue climb-in-hold to 3300. (TACAN aircraft continue climb to 4000 on FSM R-036 to FIGGS/10 DME/RADAR and hold NE, RT, 216° inbound, continue climb-in-hold to 4000.)

ATIS <b>124.775</b>	RAZORBACK APP CON ★ <b>120.9 343.75</b>	FORT SMITH TOWER ★ <b>118.3 (CTAF) 323.175</b>	GND CON <b>121.9 275.8</b>	CLNC DEL <b>133.85 278.3</b>	UNICOM <b>122.95</b>
------------------------	--	---	-------------------------------	---------------------------------	-------------------------



ELEV 469 **D** TDZE 469

GS 3.00° TCH 52

HIRL Rwy 8-26 **Ⓛ**  
MIRL Rwy 2-20 **Ⓛ**

TWR 531

	1000	3300	FSM		
	↑	↩	⬡		
IXASY FSM 17	JEMBO RADAR	FSM 7.4	FSM 6.3		
3500	1900				
080°					
6.7 NM	3.2 NM	1.1 NM			
CATEGORY	A	B	C	D	E
S-ILS 8	669-1/2		200 (200-1/2)		
S-LOC 8	880-1/2 411 (500-1/2)		880-3/4 411 (500-3/4)		
<b>C</b> CIRCLING	1140-1 671 (700-1)		1400-2 3/4 931 (1000-2 3/4)		1400-3 931 (1000-3)

SC-1, 13 JUN 2024 to 11 JUL 2024

SC-1, 13 JUN 2024 to 11 JUL 2024