


LOC I-FSM 111.3	APP CRS 260°	Rwy Idg TDZE Apt Elev	9318 448 469
---------------------------	------------------------	-----------------------------	---

ILS Z or LOC Z RWY 26

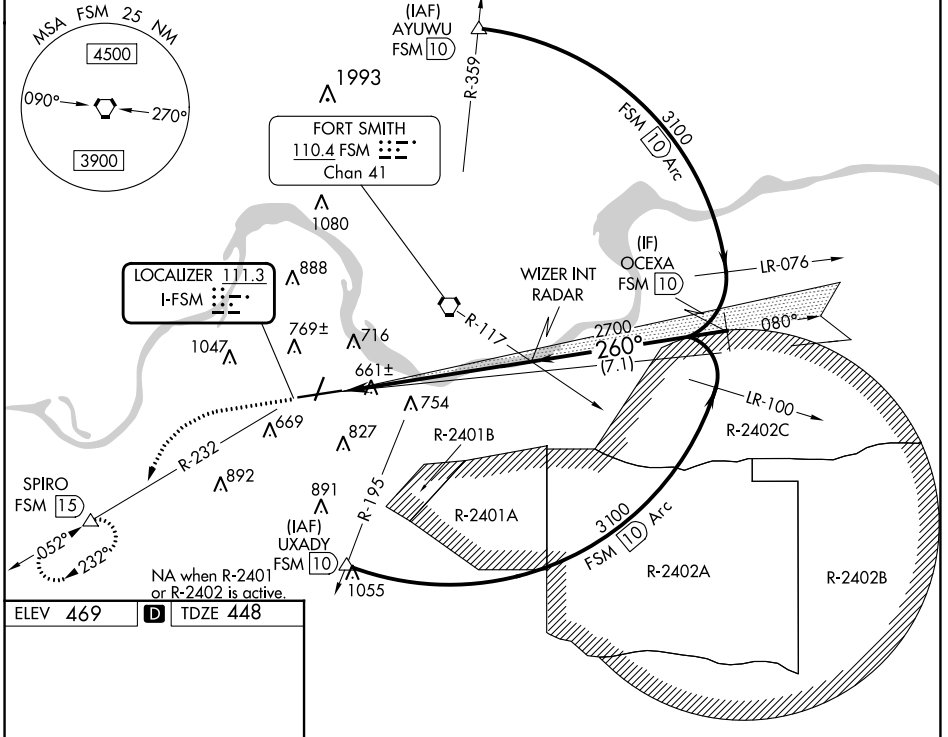
FORT SMITH RGNL (FSM)

DME required.

MALS  MISSED APPROACH: Climb to 1400 then climbing left turn to 4000 on heading 224° and FSM VORTAC R-232 to SPIRO/FSM 15 DME and hold, continue climb-in-hold to 4000.

⚠ Circling NA for Cat E when R-2401B active. Circling NA for Cat E northwest of Rwy 8 and 20. For inop ALS, increase S-ILS 26 Cat E visibility to RVR ASR 4000 and S-LOC 26 Cat C/D/E to 1 1/2 SM. Circling Rwy 20, 26 NA at night. *RVR 1800 authorized with use of FD or AP or HUD to DA.

ATIS 124.775	RAZORBACK APP CON* 120.9 343.75	FORT SMITH TOWER* 118.3 (CTAF) 0 323.175	GND CON 121.9 275.8	CLNC DEL 133.85 278.3	UNICOM 122.95
------------------------	---	---	-------------------------------	---------------------------------	-------------------------



ELEV 469 **D** TDZE 448

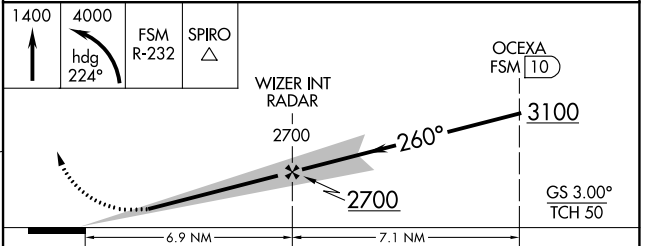
LOCALIZER 111.3 I-FSM

NA when R-2401 or R-2402 is active.

HIRL Rwy 8-26 **0**
MIRL Rwy 2-20 **0**

FAF to MAP 6.9 NM

Knots	60	90	120	150	180
Min:Sec	6:54	4:36	3:27	2:46	2:18



CATEGORY	A	B	C	D	E
S-ILS 26*	648/24 200 (200-1/2)				
S-LOC 26	960/24	512 (500-1/2)	960/55	512 (500-1)	
C CIRCLING	1140-1 671 (700-1)		1400-2 3/4 931 (1000-2 3/4)	1400-3 931 (1000-3)	

SC-1, 13 JUN 2024 to 11 JUL 2024

SC-1, 13 JUN 2024 to 11 JUL 2024