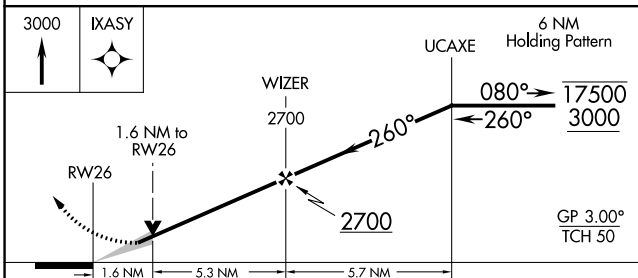
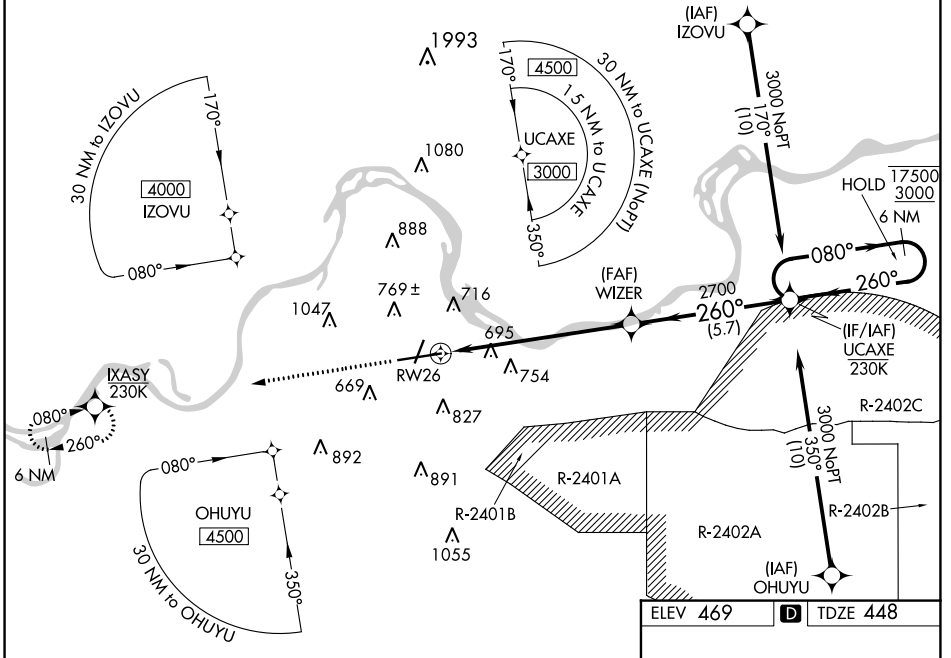


WAAS CH <b>87117</b> <b>W26A</b>	APP CRS <b>260°</b>	Rwy Idg TDZE Apt Elev	<b>9318</b> <b>448</b> <b>469</b>
--	------------------------	-----------------------------	---

# RNAV (GPS) RWY 26

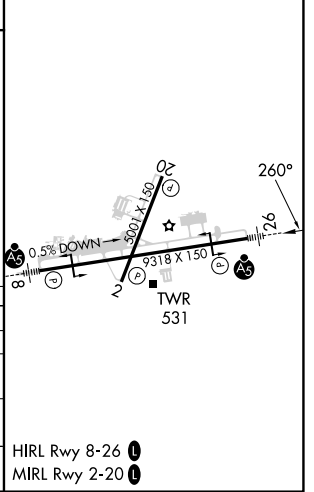
FORT SMITH RGNL (F<sup>SM</sup>)

RNP APCH - GPS.		<p>⚠ Circling NA for Cat E northwest of Rwy 8 and 20. Circling Rwy 20, 26 NA at night.                  For uncompensated Baro-VNAV systems, LNAV/VNAV NA below -11°C or above 54°C.                  Circling NA for Cat E NA when R-2401B active. For inop ALS, increase LPV Cat E visibility to RVR 4000, LNAV/VNAV all Cats visibility to 1<math>\frac{1}{2}</math> SM, and LNAV Cat E visibility to 1<math>\frac{1}{2}</math> SM.                  *RVR 1800 authorized with use of FD or AP or HUD to DA.</p>		MALSR	MISSED APPROACH: Climb to 3000 direct IXASY and hold.
ATIS <b>124.775</b>	RAZORBACK APP CON * <b>120.9 343.75</b>	FORT SMITH TOWER * <b>118.3 (CTAF) 323.175</b>	GND CON <b>121.9 275.8</b>	CLNC DEL <b>133.85 278.3</b>	UNICOM <b>122.95</b>



ELEV 469	TDZE 448
----------	----------

CATEGORY	A	B	C	D	E
LPV DA *	648/24		200 (200- $\frac{1}{2}$ )		
LNAV/VNAV DA	962/55		514 (500-1)		
LNAV MDA	1000/24 552 (600- $\frac{1}{2}$ )		1000/60		552 (600- $\frac{1}{4}$ )
<b>C</b> CIRCLING	1140-1 671 (700-1)		1400-2 $\frac{3}{4}$ 931 (1000-2 $\frac{3}{4}$ )		1400-3 931 (1000-3)



SC-1, 13 JUN 2024 to 11 JUL 2024

SC-1, 13 JUN 2024 to 11 JUL 2024