

JNC8.JNC) 24137

AL-634 (FAA)

GRAND JUNCTION RGNL (GJT)  
GRAND JUNCTION, COLORADO

# GRAND JUNCTION EIGHT DEPARTURE

DENVER DEP CON ★  
119.7 317.4  
ATIS  
118.55  
GND CON  
121.7 257.8  
GRAND JUNCTION TOWER ★  
118.1 257.8

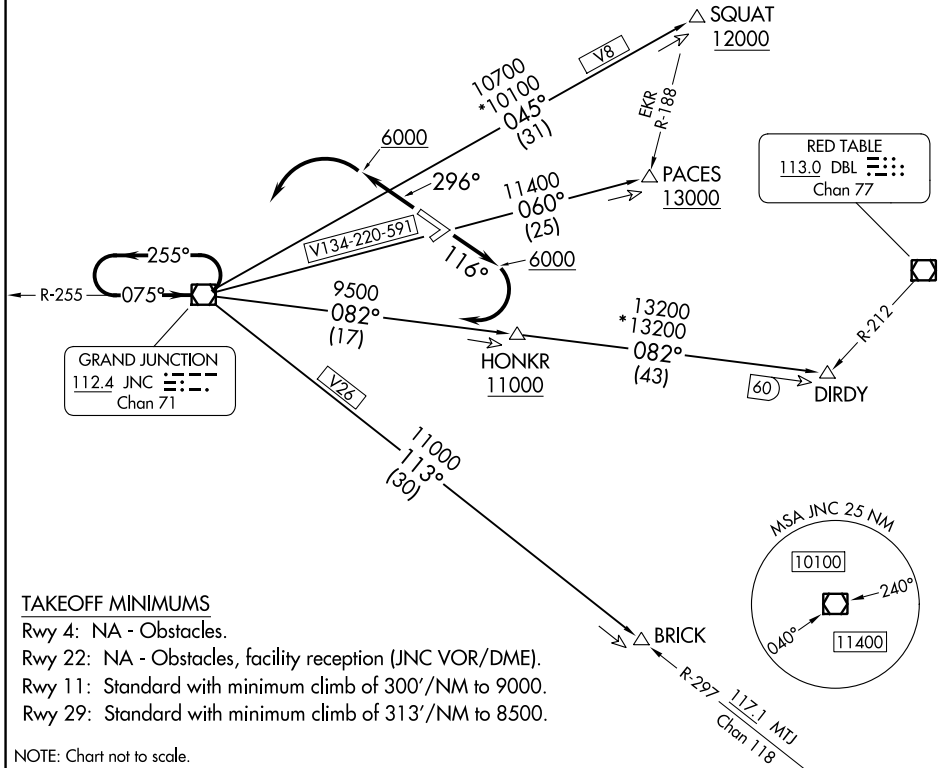
BRICK and DIRDY Transition: DME required.

**TOP ALTITUDE:**  
**6000**

MEEKER  
115.2 EKR  
Chan 99

RED TABLE  
113.0 DBL  
Chan 77

GRAND JUNCTION  
112.4 JNC  
Chan 71



SW-1, 13 JUN 2024 to 11 JUL 2024

SW-1, 13 JUN 2024 to 11 JUL 2024

### TAKEOFF MINIMUMS

- Rwy 4: NA - Obstacles.
- Rwy 22: NA - Obstacles, facility reception (JNC VOR/DME).
- Rwy 11: Standard with minimum climb of 300'/NM to 9000.
- Rwy 29: Standard with minimum climb of 313'/NM to 8500.

NOTE: Chart not to scale.

### DEPARTURE ROUTE DESCRIPTION

- TAKEOFF RUNWAY 11:** Climb on heading 116° to 6000, then right turn direct JNC VOR/DME, thence. . . .
- TAKEOFF RUNWAY 29:** Climb on heading 296° to 6000, then left turn direct JNC VOR/DME, thence. . . .
- . . . (transition) maintain 6000, expect filed altitude 10 minutes after departure.
- BRICK TRANSITION (JNC8.BRICK):** From over JNC VOR/DME on JNC R-113 to BRICK.
- DIRDY TRANSITION (JNC8.DIRDY):** From over JNC VOR/DME on JNC R-082 to DIRDY.
- PACES TRANSITION (JNC8.PACES):** From over JNC VOR/DME on JNC R-060 to PACES.
- SQUAT TRANSITION (JNC8.SQUAT):** From over JNC VOR/DME on JNC R-045 to SQUAT.

**GRAND JUNCTION EIGHT DEPARTURE**  
(JNC8.JNC) 16MAY24

GRAND JUNCTION, COLORADO  
GRAND JUNCTION RGNL (GJT)