


WAAS CH 40001 W06A	APP CRS 056°	Rwy Idg TDZE Apt Elev	6997 380 398
--	------------------------	-----------------------------	---

RNAV (GPS) RWY 6

COLUMBUS (CSG)

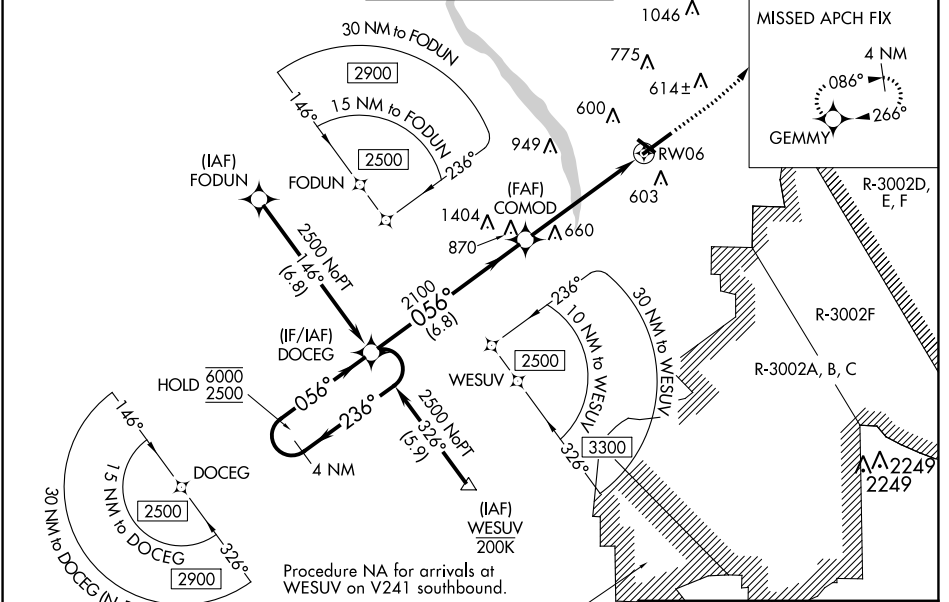
RNP APCH - GPS.

⚠ Circling to Rwy 13, 31 and 24 NA at night. Rwy 6 helicopter visibility reduction below 3/4 SM NA. For uncompensated Baro-VNAV systems, LNAV/VNAV NA below -4°C or above 54°C. For inop ALS, increase LPV all Cats visibility to RVR 4500. For inop ALS, increase LNAV Cats A and B visibility to RVR 5500 and Cats C and D visibility to 1 1/2 SM.

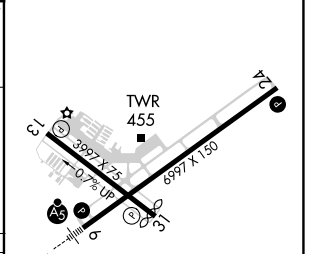
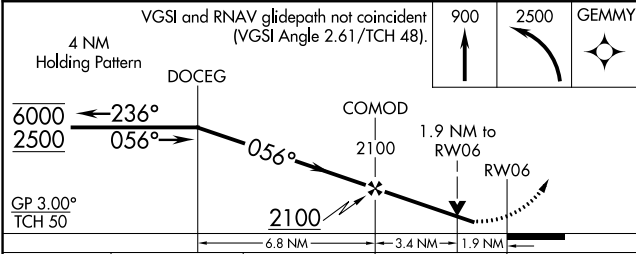
MALSR 

MISSED APPROACH: Climb to 900, then climbing left turn to 2500 direct GEMMY and hold.


ATIS 127.75	ATLANTA APP CON * 125.5 323.1	COLUMBUS TOWER * 120.1 (CTAF) 257.8	GND CON 121.9 348.6	UNICOM 122.95
-----------------------	---	---	-------------------------------	-------------------------





ELEV 398	D TDZE 380
----------	-------------------



CATEGORY	A	B	C	D
LPV DA		659/40	279 (300-3/4)	
LNAV/VNAV DA		832/45	452 (500-7/8)	
LNAV MDA	960/40	580 (600-3/4)	960-1 1/4	580 (600-1 1/4)
C CIRCLING	960-1	562 (600-1)	1140-2 1/4 742 (800-2 1/4)	1300-3 902 (1000-3)

REIL Rwy 24 

HIRL Rwy 6-24 

MRL Rwy 13-31 

REIL Rws 13 and 31

SE-4, 13 JUN 2024 to 11 JUL 2024

SE-4, 13 JUN 2024 to 11 JUL 2024