

WAAS CH 86234 W22A	APP CRS 223°	Rwy Idg 8748 TDZE 36 Apt Elev 40
--	------------------------	---

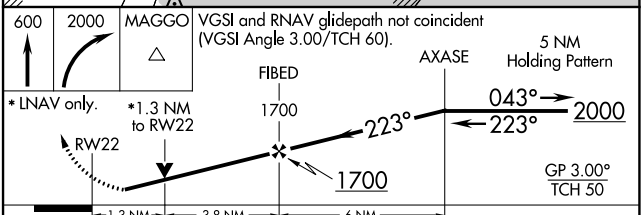
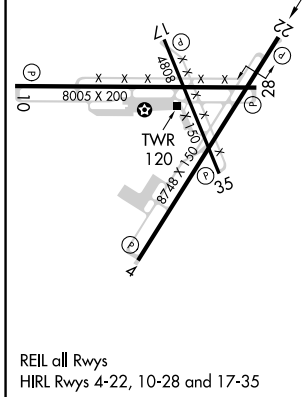
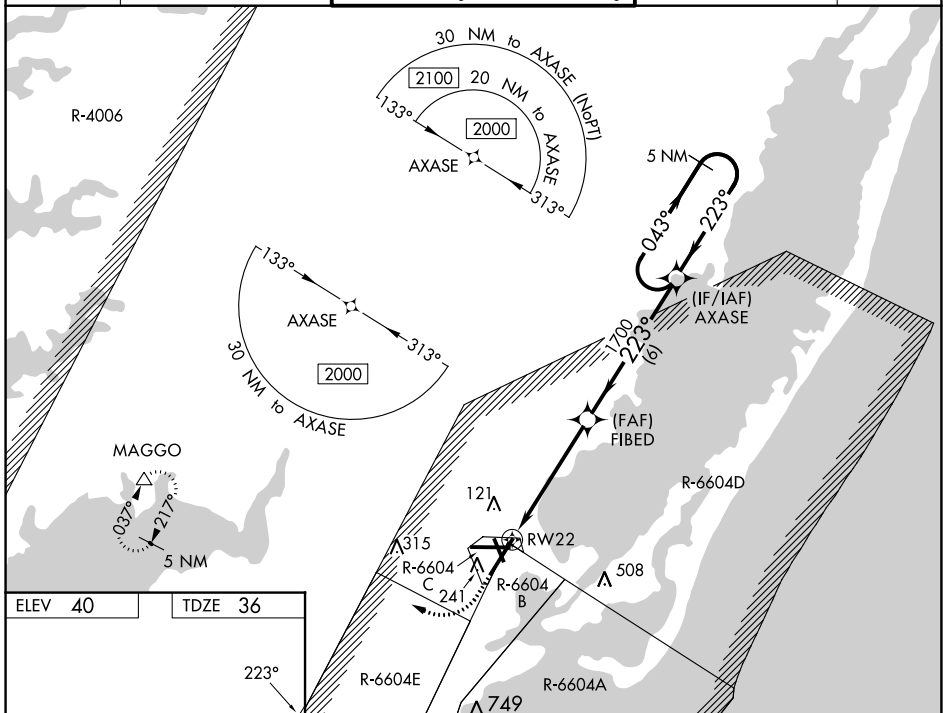
RNAV (GPS) RWY 22

WALLOPS FLIGHT FACILITY (WAL)

⚠ For uncompensated Baro-VNAV systems, LNAV/VNAV NA below -11°C (13°F) or above 54°C (130°F). DME/DME-RNP 0.3 NA. Helicopter visibility reduction below 3/4 SM NA. When local altimeter setting not received, use Salisbury altimeter setting; increase LPV DA to 367 and all Cats visibility 1/4 mile; increase LNAV/VNAV DA to 489 and all Cats visibility 1/8 mile; increase all MDA 60 feet and LNAV Cats C/D visibility 1/8 mile and Circling Cat C visibility 1/4 mile. Baro-VNAV and VDP NA when using Salisbury altimeter setting.

MISSED APPROACH: Climb to 600 then climbing right turn to 2000 direct MAGGO and hold.

ASOS 119.175	PATUXENT APP CON ★ 127.95 314.0	WALLOPS TOWER ★ 126.5 (CTAF) 0 306.975 (CTAF) 0	GND CON 127.875 269.325	CLNC DEL 121.7
------------------------	---	---	-----------------------------------	--------------------------



CATEGORY	A	B	C	D
LPV DA		314-7/8	278 (300-7/8)	
LNAV/VNAV DA		436-1 1/8	400 (400-1 1/8)	
LNAV MDA	500-1	464 (500-1)	500-1 3/8	464 (500-1 3/8)
C CIRCLING	600-1	560 (600-1)	620-1 1/2 580 (600-1 1/2)	860-2 3/4 820 (900-2 3/4)

NE-3, 13 JUN 2024 to 11 JUL 2024

NE-3, 13 JUN 2024 to 11 JUL 2024