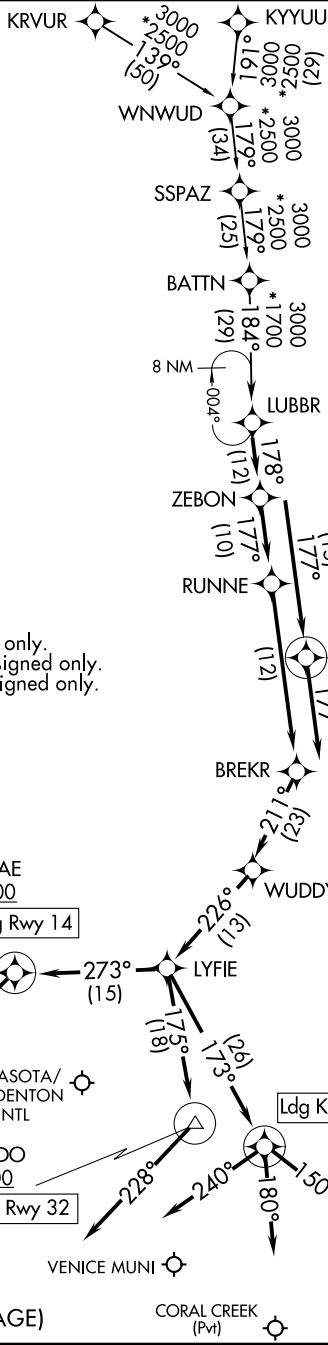


# LUBBR THREE ARRIVAL (RNAV)

SARASOTA/BRADENTON, FLORIDA

|   |
|---|
| RNAV 1 - DME/DME/IRU or GPS.<br>RADAR required. |
|---|

TAMPA APP CON  
135.5 279.6 (LAL/SRQ/VNC)  
119.65 353.575 (PGD/FA54)  
LAL ATIS  
118.025  
PGD ATIS \*  
135.675  
SRQ ATIS  
124.375



NOTE: Jet and turboprop aircraft only.  
NOTE: KRVUR Transition ATC assigned only.  
NOTE: SSPAZ Transition ATC assigned only.

RUTAE  
3000  
KSRQ Ldg Rwy 14

MURDO  
3000  
KSRQ Ldg Rwy 32

ZEPHR  
3000  
Ldg KLAL

ROSTY  
3000  
Ldg KPGD/KVNC/FA54

(NARRATIVE ON FOLLOWING PAGE)

# LUBBR THREE ARRIVAL (RNAV)

SARASOTA/BRADENTON, FLORIDA

SE-3, 13 JUN 2024 to 11 JUL 2024

SE-3, 13 JUN 2024 to 11 JUL 2024

NOTE: Chart not to scale.