

(ZARLO2.ZARLO) 21112

# ZARLO TWO DEPARTURE (RNAV)

AL-641 (FAA)

PANGBORN MEML (EAT)  
WENATCHEE, WASHINGTON

NW-1, 13 JUN 2024 to 11 JUL 2024

## DEPARTURE ROUTE DESCRIPTION

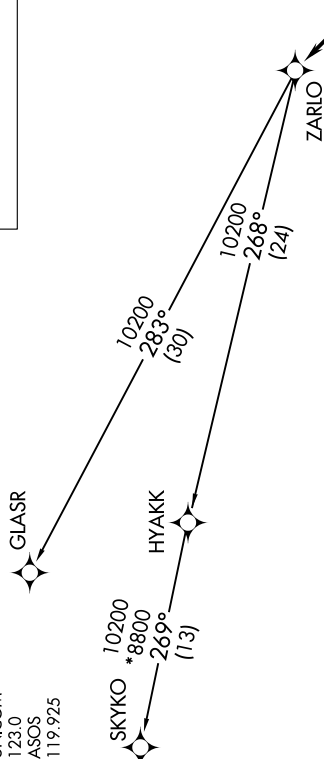
**TAKEOFF RUNWAY 12:** Climb heading 120° to 3700, then left turn direct PREBE, thence . . .  
**TAKEOFF RUNWAY 30:** Climb heading 300° to 1750, then direct PREBE, thence . . .

. . . on track 300° to cross UBIYO at or above 6700, then on depicted route to ZARLO, then on transition. Expect filed altitude 10 minutes after departure.

GLASR TRANSITION [ZARLO2.GLASR]  
SKYKO TRANSITION [ZARLO2.SKYKO]

## TOP ALTITUDE: ASSIGNED BY ATC.

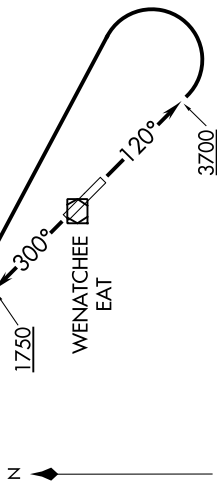
SEATTLE CENTER  
126.1  
UNICOM  
123.0  
ASOS  
119.925



## TAKEOFF MINIMUMS

Rwy 12: Standard with minimum climb of 650' per NM to 3300.  
Rwy 30: Standard with minimum climb of 465' per NM to 6200.

NOTE: RNAV 1.  
NOTE: GPS required.  
NOTE: Departures may be restricted to cross UBIYO at or below 11000.



NOTE: Chart not to scale.

# ZARLO TWO DEPARTURE (RNAV)

(ZARLO2.ZARLO) 10NOV16

WENATCHEE, WASHINGTON  
PANGBORN MEML (EAT)

NW-1, 13 JUN 2024 to 11 JUL 2024