

WAAS CH <b>45599</b> <b>W17A</b>	APP CRS <b>176°</b>	Rwy Idg TDZE <b>207</b> Apt Elev <b>208</b>
--	------------------------	---

# RNAV (GPS) RWY 17

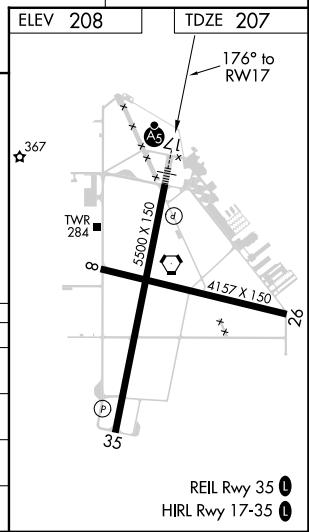
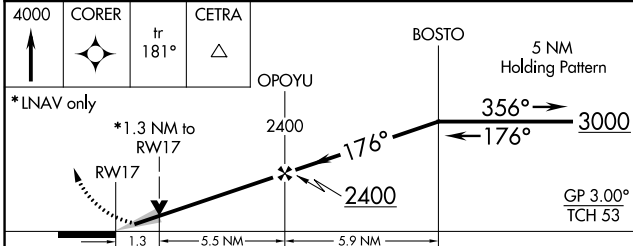
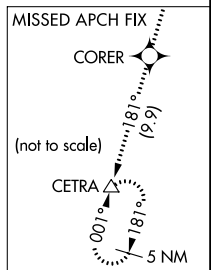
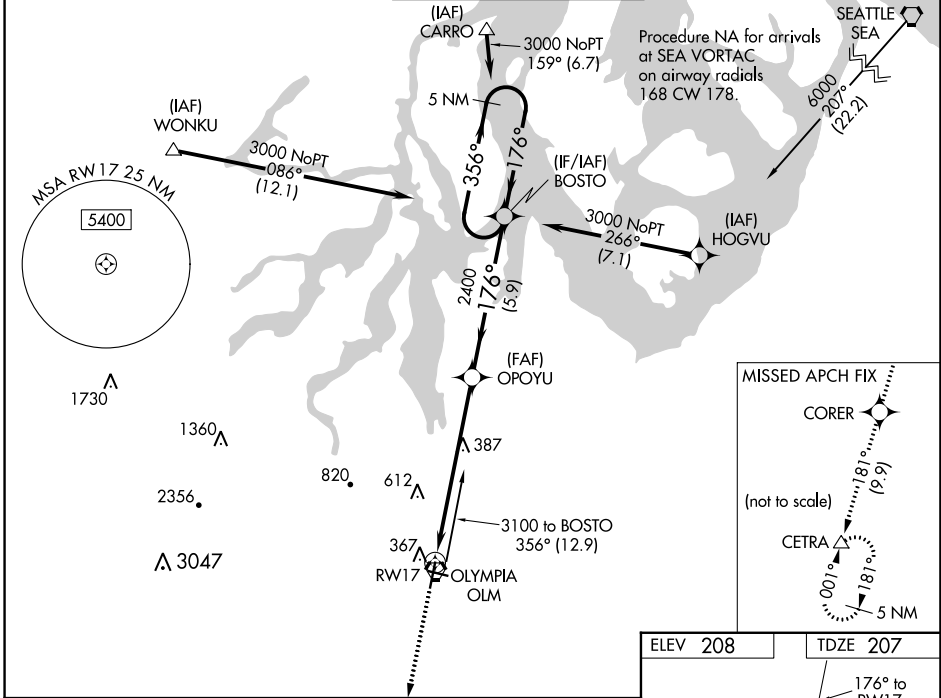
OLYMPIA RGNL (OLM)

**⚠** For uncompensated Baro-VNAV systems, LNAV/VNAV NA below -9°C (16°F) or above 54°C (130°F). DME/DME RNP-0.3 NA.  
**⚠** For inop ALS; increase LNAV/VNAV visibility all Cats to 1½ SM. Increase LNAV Cats C/D to 1¾ SM.



**MISSED APPROACH:** Climb to 4000 direct CORER and on track 181° to CETRA and hold, continue climb-in-hold to 4000.

ATIS ★ <b>135.725</b>	SEATTLE APP CON <b>121.1 290.9</b>	OLYMPIA TOWER ★ <b>124.4 (CTAF) 254.25</b>	GND CON <b>121.6</b>	UNICOM <b>122.95</b>
--------------------------	---------------------------------------	---	-------------------------	-------------------------



CATEGORY	A	B	C	D
LPV DA	407-½ 200 (200-½)			
LNAV/VNAV DA	629-¾ 422 (500-¾)			
LNAV MDA	680-½ 473 (500-½)	680-1 473 (500-1)		
CIRCLING	720-1	860-1	1020-2½	1020-2¾
	512 (600-1)	652 (700-1)	812 (900-2½)	812 (900-2¾)

NW-1, 13 JUN 2024 to 11 JUL 2024

NW-1, 13 JUN 2024 to 11 JUL 2024

REIL Rwy 35  
HIRL Rwy 17-35