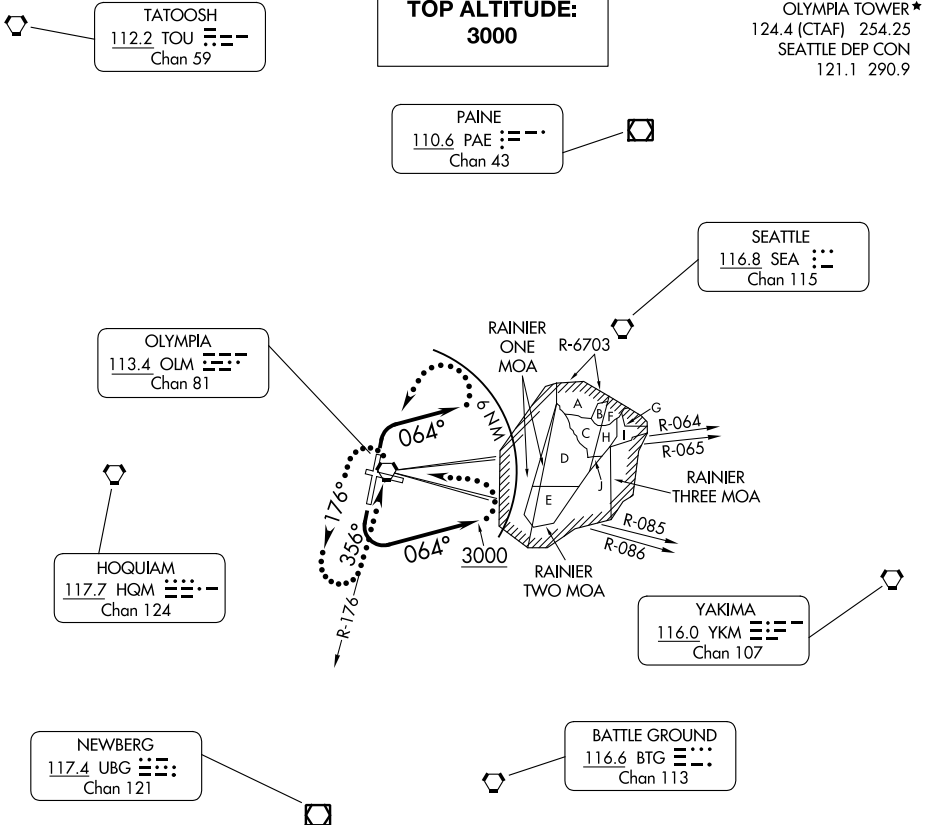


(YELM5.YELM) 23334

YELM FIVE DEPARTURE

AL-645 (FAA)

OLYMPIA RGNL (OLM)
OLYMPIA, WASHINGTON



NW-1, 13 JUN 2024 to 11 JUL 2024

NW-1, 13 JUN 2024 to 11 JUL 2024

TAKEOFF MINIMUMS

Rwys 8, 26: NA- ATC.

Rwy 17: 300-2 with minimum climb of 210' per NM to 2200 or standard with minimum climb of 720' per NM to 500.

Rwy 35: Standard.

NOTE: RADAR required.

NOTE: Chart not to scale.



DEPARTURE ROUTE DESCRIPTION

TAKEOFF RUNWAY 17: Turn left, climb heading 064° to 3000, thence. . . .

TAKEOFF RUNWAY 35: Turn right, climb heading 064°, maintain 3000 thence. . . .

. . . .for RADAR vectors on course and filed altitude.

LOST COMMUNICATIONS: If no contact with ATC within 6 NM of OLM VORTAC, or 2 minutes after departure for non-DME aircraft, turn left direct OLM VORTAC, continue climb in OLM VORTAC holding pattern to cross OLM VORTAC at or above R-086 CW R-064 4200 feet; R-065 CW R-085 7300 feet, continue climb on assigned route.

YELM FIVE DEPARTURE

(YELM5.YELM) 19JUL18

OLYMPIA, WASHINGTON
OLYMPIA RGNL (OLM)