

WAAS CH 77813 W32A	APP CRS 321°	Rwy Idg 6513 TDZE 712 Apt Elev 721
--	------------------------	---

RNAV (GPS) RWY 32

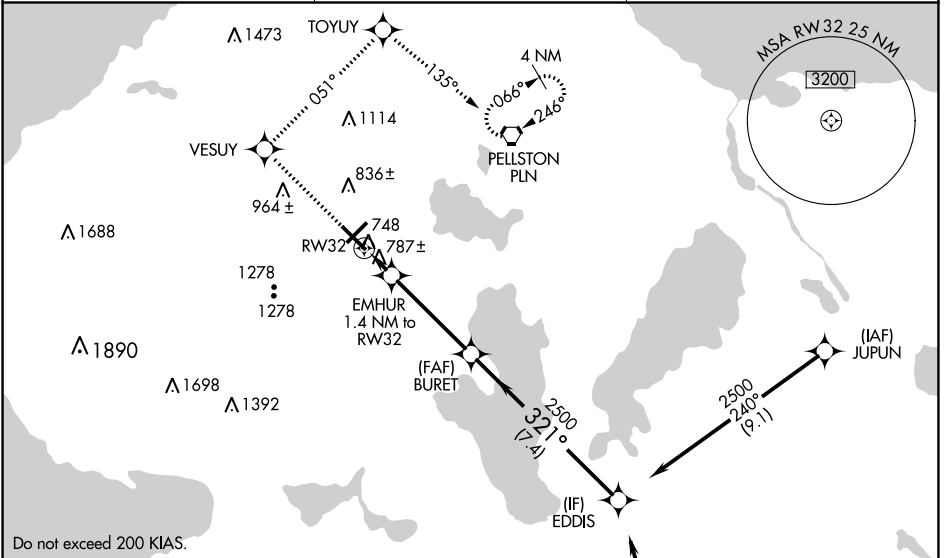
PELLSTON RGNL/EMMET COUNTY (PLN)

⚠ Baro-VNAV NA when using Harbor Springs altimeter setting. For uncompensated Baro-VNAV systems, LNAV/VNAV NA below -16°C (4°F) or above 47°C (116°F). DME/DME RNP-0.3 NA. When local altimeter setting not received, use Harbor Springs altimeter setting and increase LPV DA to 942 feet, LNAV/VNAV DA to 1086 feet, and all MDA 40 feet. Circling Rwy 5, 14, 23 NA at night. For inop MALSRS when using Harbor Springs altimeter setting, increase LNAV visibility Cats C/D to 1 ½ mile.

MALSRS

MISSED APPROACH:
Climb to 2600 direct VESUY and via track 051° to TOYUY and via track 135° to PLN VORTAC and hold.

ASOS 119.025	MINNEAPOLIS CENTER 134.6 354.05	UNICOM 123.0 (CTAF) 0
------------------------	---	---------------------------------



EC-1, 13 JUN 2024 to 11 JUL 2024

EC-1, 13 JUN 2024 to 11 JUL 2024

Do not exceed 200 KIAS.

ELEV 721	D	TDZE 712
----------	----------	----------

HIRL Rwy 14-32 **0**
MIRL Rwy 5-23 **0**
REIL Rwy 5, 14, and 23 **0**

Procedure NA for arrivals at RONDO via V609 southbound.

2600	VESUY	tr 051°	TOYUY	tr 135°	PLN	Procedure Turn NA
------	-------	---------	-------	---------	-----	-------------------

* LNAV only.

CATEGORY	A	B	C	D
LPV DA		912-½	200 (200-½)	
LNAV/VNAV DA		1056-⅝	344 (400-⅝)	
LNAV MDA	1080-½	368 (400-½)	1080-⅝	368 (400-⅝)
CIRCLING	1280-1 559 (600-1)	1320-1 599 (600-1)	1560-2½ 839 (900-2½)	1660-3 939 (1000-3)

GP 3.00°
TCH 54'