

| | | |
|-------------|----------|-------------|
| APP CRS | Rwy Idg | 5000 |
| 333° | TDZE | 999 |
| | Apt Elev | 1009 |

RNAV (GPS) RWY 33

WORCESTER RGNL (ORH)

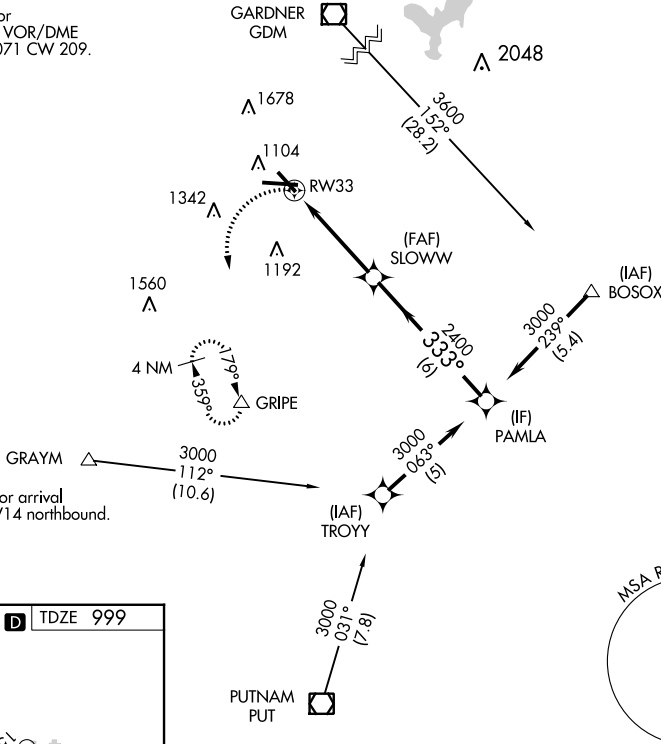
RNP APCH.

- ▼ When local altimeter setting not received, use Bedford altimeter setting and increase all MDAs 200 feet and visibility LNAV Cat C/D 5/8 SM and visibility Circling Cat B 1/4 SM. VDP NA with Bedford altimeter setting.

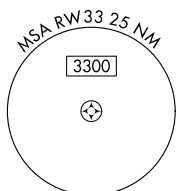
MISSED APPROACH:
Climbing left turn to 3000
direct GRIPE and hold.

| | | | | | | |
|---------------|--------------------|---------------------------|---------------|---------------|-----------------------------------|---------------|
| ATIS | BRADLEY APP CON | WORCESTER TOWER★ | GND CON | CLNC DEL | CLNC DEL | UNICOM |
| 126.55 | 119.0 327.1 | 120.5 (CTAF) 263.0 | 123.85 | 128.65 | 119.0 (When twr closed) | 122.95 |

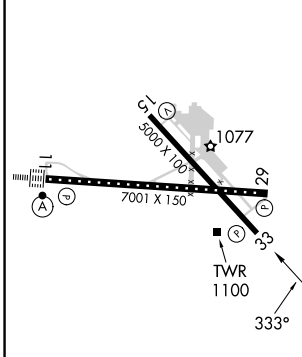
Procedure NA for arrival on GDM VOR/DME
airway radials 071 CW 209.



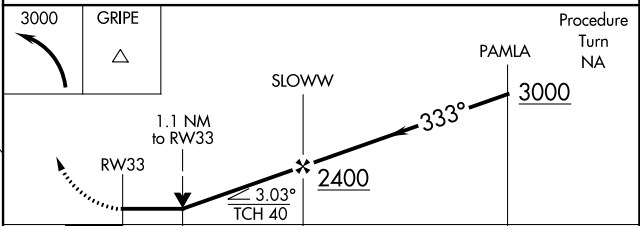
Procedure NA for arrival at GRAYM on V14 northbound.



| | | |
|-----------|----------|----------|
| ELEV 1009 | D | TDZE 999 |
|-----------|----------|----------|



- TDZ/CL Rwy 11
- REIL Rws 15, 29 and 33
- HIRL Rwy 11-29
- MIRL Rwy 15-33



| CATEGORY | A | B | C | D |
|-------------------|-----------------------|-----------------------|---------------------|-----------------|
| LNAV MDA | 1480-1 | 482 (500-1) | 1480 -1 3/8 | 482 (500-1 1/8) |
| C CIRCLING | 1560-1 551 (600-1) | 1720-1 711 (800-1) | 2000-3 991 (1000-3) | |

NE-1, 13 JUN 2024 to 11 JUL 2024

NE-1, 13 JUN 2024 to 11 JUL 2024