

APP CRS <b>257°</b>	Rwy Idg <b>4500</b>
	TDZE <b>9</b>
	Apt Elev <b>13</b>

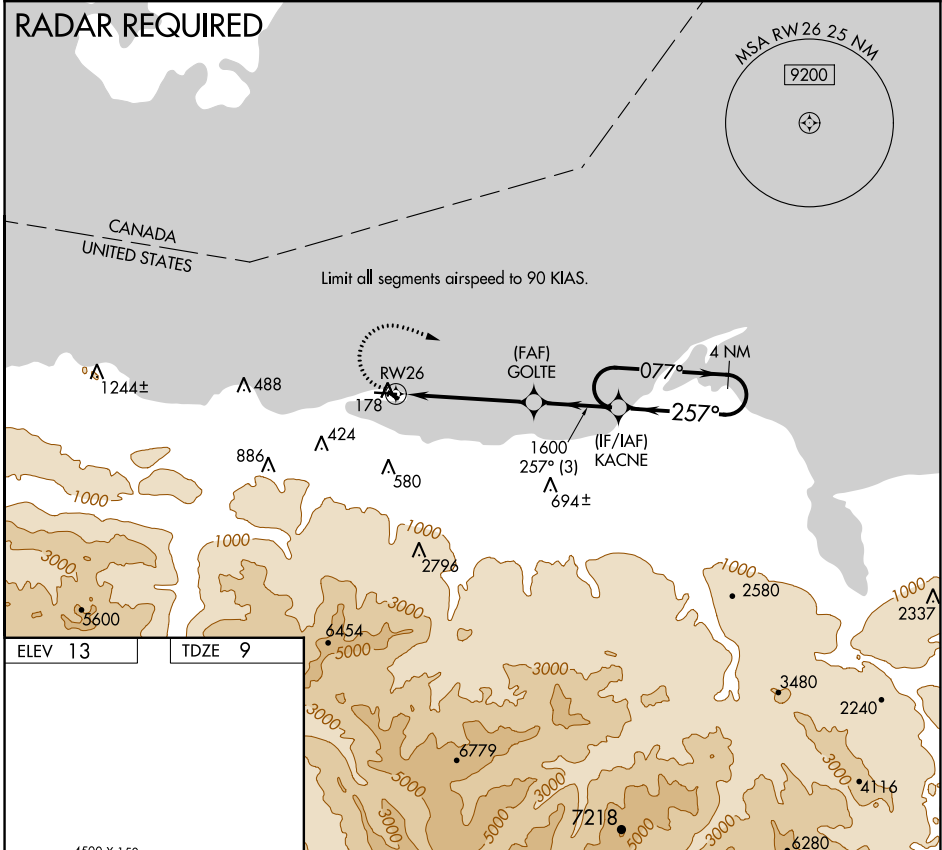
# COPTER RNAV (GPS) RWY 26

PORT ANGELES CGAS (NOW)

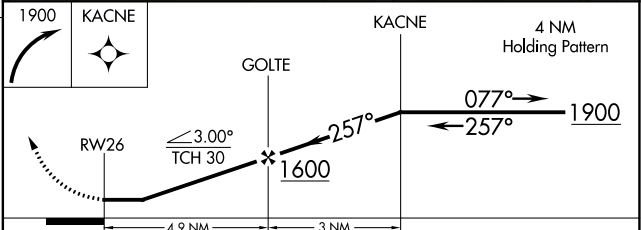
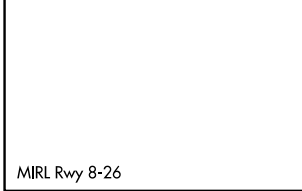
**⚠** Use William R Fairchild Intl altimeter setting; when not received, use Whidbey Island NAS (Autl Fld) altimeter setting and increase MDA 120 feet. DME/DME RNP-0.3 NA. Prior permission required.

**⚠** MISSED APPROACH: Climbing right turn to 1900 direct KACNE and hold.

AWOS-3P <b>118.325</b>	WHIDBEY APP CON <b>118.2 285.65</b>	PORT ANGELES AIR <b>127.7 345.0</b>	CLNC DEL <b>124.15</b>	UNICOM <b>122.975</b> (CTAF)
---------------------------	--	--	---------------------------	---------------------------------



ELEV 13	TDZE 9
---------	--------



CATEGORY	COPTER
LNAV MDA	560-1 551 (600-1)

NW-1, 13 JUN 2024 to 11 JUL 2024

NW-1, 13 JUN 2024 to 11 JUL 2024