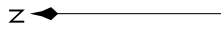
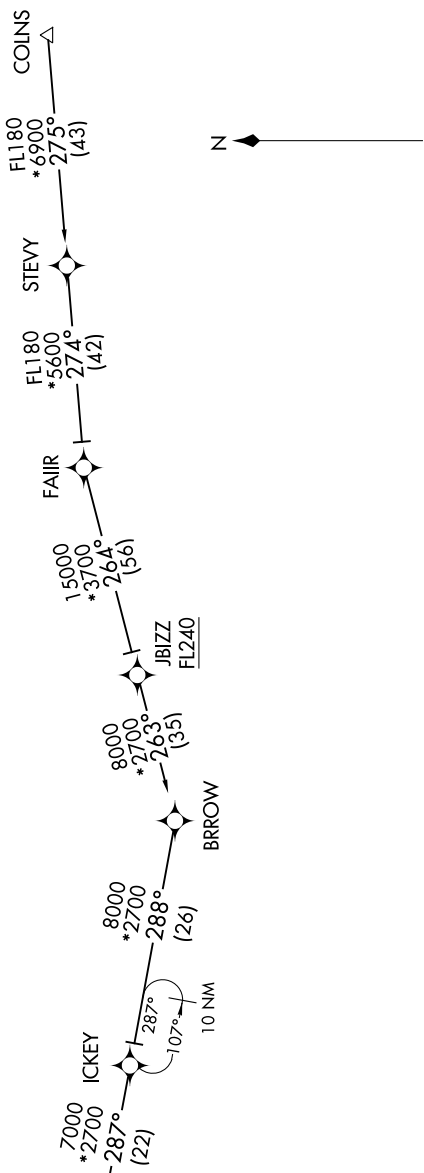
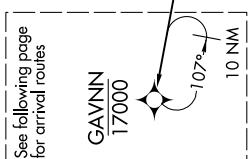


SE-1, 13 JUN 2024 to 11 JUL 2024

RNAV 1 - DME/DME/IRU or GPS.
RADAR required.

CINCINNATI APP CON
119.7 363.15 (090°-269°)
123.875 363.15 (270°-089°)
D-ATIS
134.375



(CONTINUED ON FOLLOWING PAGE)

COLINS TRANSITION (COLNS.GAVNN7):
FAIR TRANSITION (FAIR.GAVNN7):

NOTE: Chart not to scale.

SE-1, 13 JUN 2024 to 11 JUL 2024