

LOC I-JDP 108.7	APP CRS 276°	Rwy Idg TDZE Apt Elev 12000 875 896
---------------------------	------------------------	---

ILS or LOC RWY 27

CINCINNATI/NORTHERN KENTUCKY INTL (CVG)

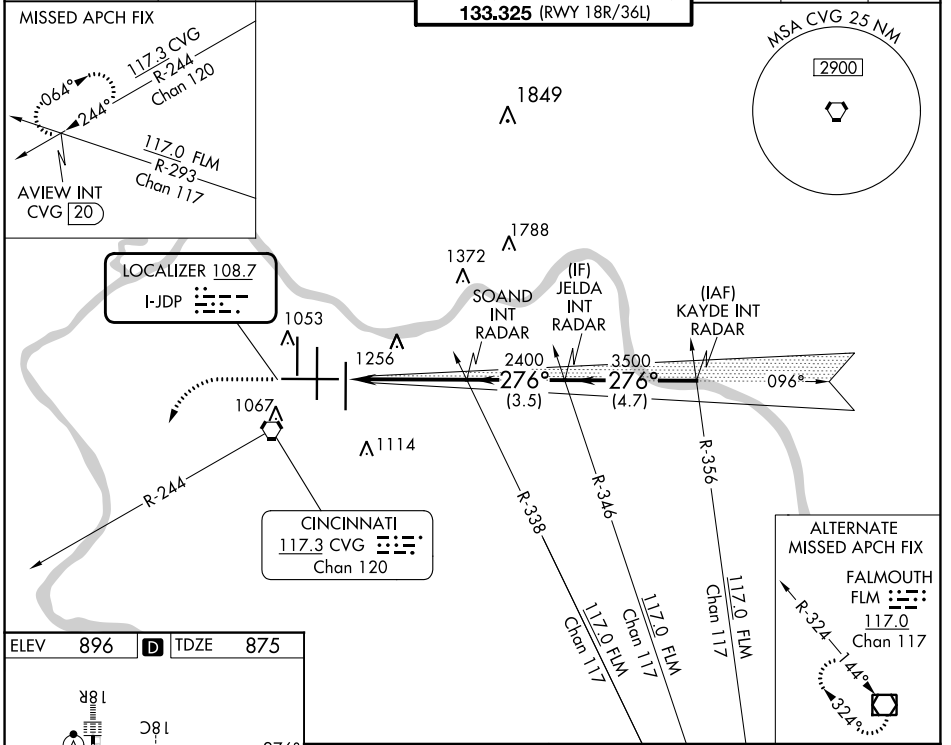
RADAR required for procedure entry.

For inop ALS, increase S-LOC 27 Cat C/D visibility to 1 3/8 SM.
** RVR 1800 authorized with use of FD or AP or HUD to DA.

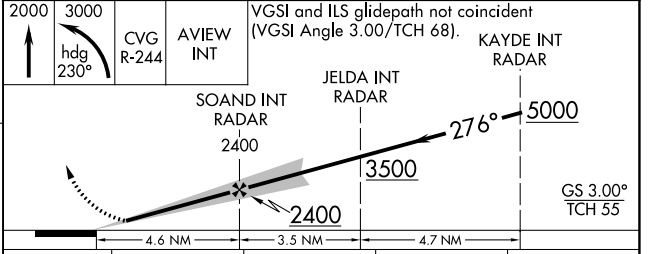
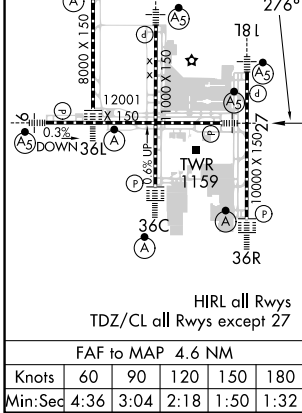
MALSRL

MISSED APPROACH: Climb to 2000 then climbing left turn to 3000 on heading 230° and CVG R-244 to AVIEW INT/CVG 20 DME and hold.

D-ATIS ARR 134.375	DEP 135.3	CINCINNATI APP CON 119.7 363.15 (090°-269°) 123.875 363.15 (270°-089°)	CINCINNATI TOWER 118.975 360.85 (RWY 18L/36R) 118.3 (RWYS 18C/36C, 09/27) 133.325 (RWY 18R/36L)	GND CON 121.7	CLNC DEL 127.175	CPDLC
---------------------------------	---------------------	--	---	-------------------------	----------------------------	-------



ELEV 896	D	TDZE 875
----------	----------	----------



CATEGORY	A	B	C	D
S-ILS 27 **	1075/24 200 (200-1/2)			
S-LOC 27	1340/24	465 (500-1/2)	1340/50	465 (500-1)
<input checked="" type="checkbox"/> CIRCLING	1460-1	564 (600-1)	1560-1 3/4 664 (700-1 3/4)	1560-2 664 (700-2)

SE-1, 13 JUN 2024 to 11 JUL 2024

SE-1, 13 JUN 2024 to 11 JUL 2024