

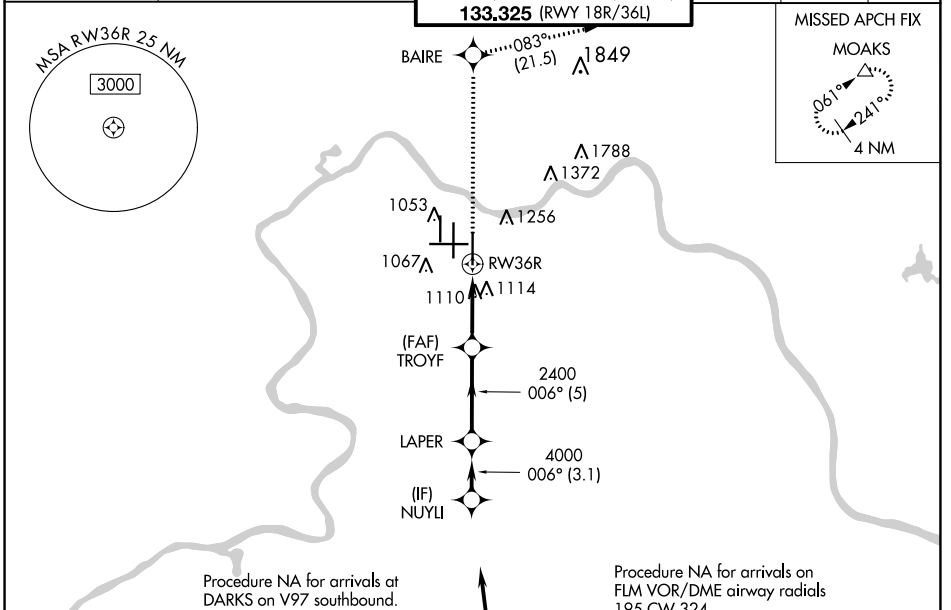
|                         |                        |  |
|-------------------------|------------------------|--|
| WAAS<br>CH <b>42709</b> | APP CRS<br><b>006°</b> | Rwy Idg <b>10000</b><br>TDZE <b>896</b><br>Apt Elev <b>896</b> |
| <b>W36D</b>             |                        |  |

# RNAV (GPS) Y RWY 36R

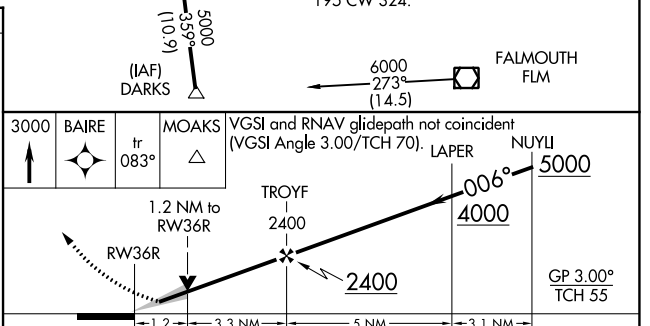
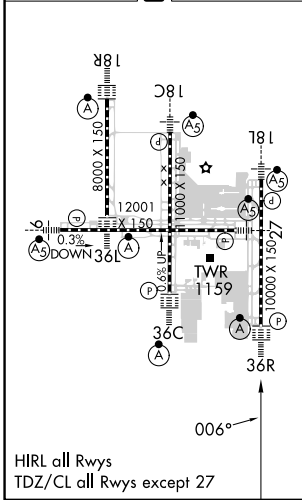
CINCINNATI/NORTHERN KENTUCKY INTL (CVG)

|  |            |  |
|--|------------|--|
| RNP APCH - GPS.  | ALSF-2<br> | MISSED APPROACH:<br>Climb to 3000 direct<br>BAIRE and on 083°<br>track to MOAKS and<br>hold. |
| ▼ For uncompensated Baro-VNAV systems, LNAV/VNAV NA below -16°C or above 54°C. Simultaneous approach authorized with Rwy 36L/C. LNAV procedure NA during simultaneous operations. Use of FD or AP providing RNAV track guidance required during simultaneous operations. |            |  |

|   |   |   |                         |                            |       |
|---|---|---|-------------------------|----------------------------|-------|
| D-ATIS<br>ARR <b>134.375</b> DEP <b>135.3</b> | CINCINNATI APP CON<br><b>119.7 363.15</b> (090°-269°) | CINCINNATI TOWER<br><b>118.975 360.85</b> (RWY 18L/36R)<br><b>118.3</b> (RWYS 18C/36C, 09/27)<br><b>133.325</b> (RWY 18R/36L) | GND CON<br><b>121.7</b> | CLNC DEL<br><b>127.175</b> | CPDLC |
|---|---|---|-------------------------|----------------------------|-------|



|          |          |          |
|----------|----------|----------|
| ELEV 896 | <b>D</b> | TDZE 896 |
|----------|----------|----------|



| CATEGORY     | A                   | B                    | C                  | D |
|--------------|---------------------|----------------------|--------------------|---|
| LPV DA       | 1096/18 200 (200-½) |                      |                    |   |
| LNAV/VNAV DA | 1340/45 444 (500-¾) |                      |                    |   |
| LNAV MDA     | 1360/24 464 (500-½) | 1360/50 464 (500-1)  |                    |   |
| CIRCLING     | 1460-1 564 (600-1)  | 1560-1¾ 664 (700-1¾) | 1560-2 664 (700-2) |   |

SE-1, 13 JUN 2024 to 11 JUL 2024

SE-1, 13 JUN 2024 to 11 JUL 2024