

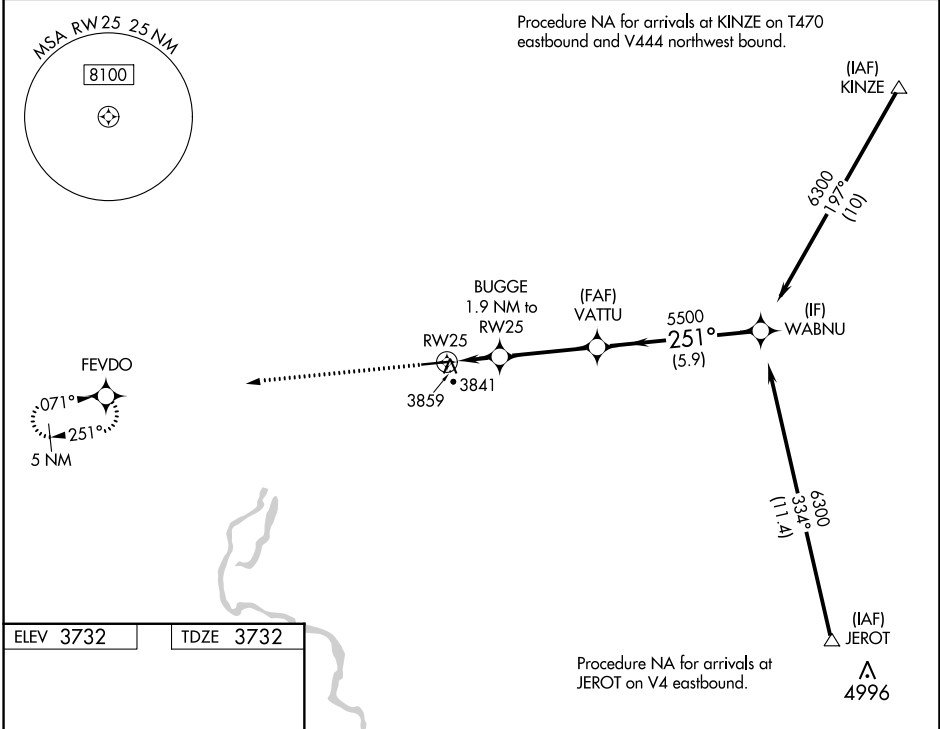
WAAS CH 45909 W25A	APP CRS 251°	Rwy Idg 5371 TDZE 3732 Apt Elev 3732
--	------------------------	---

RNAV (GPS) RWY 25

GOODING MUNI (GNG)

RNP APCH - GPS.	MISSED APPROACH: Climb to 5900 direct FEVDO and hold.
<p>▼ For uncompensated Baro-VNAV systems, LNAV/VNAV NA below -22°C or above 54°C.</p> <p>▲</p>	

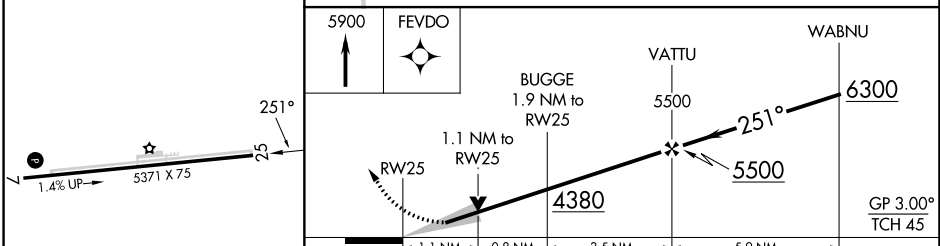
AWOS-3PT 124.175	SALT LAKE CENTER 118.05 363.0	UNICOM 122.8 (CTAF) 0
----------------------------	---	---------------------------------



NW-1, 13 JUN 2024 to 11 JUL 2024

NW-1, 13 JUN 2024 to 11 JUL 2024

ELEV 3732	TDZE 3732
-----------	-----------



CATEGORY	A	B	C	D
LPV DA		3982-3/4	250 (300-3/4)	
LNAV/VNAV DA		4020-7/8	288 (300-7/8)	
LNAV MDA	4120-1	388 (400-1)	4120-1 1/8	388 (400-1 1/8)

REIL Rwy 7 0

MIRL Rwy 7-25 0