

| | | |
|--|------------------------|---|
| LOC/DME I-VMH 109.55 Chan 32 (Y) | APP CRS 310° | Rwy Idg 5596 TDZE 974 Apt Elev 974 |
|--|------------------------|---|

ILS or LOC RWY 31

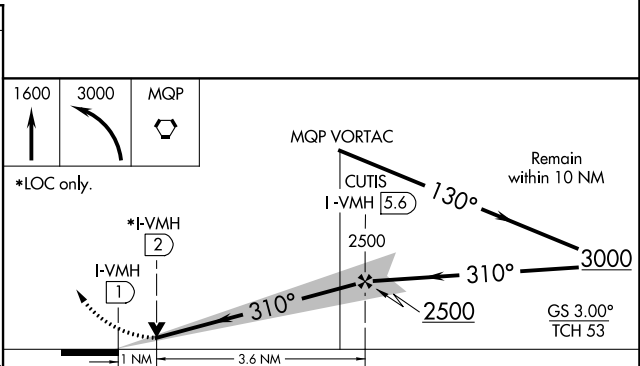
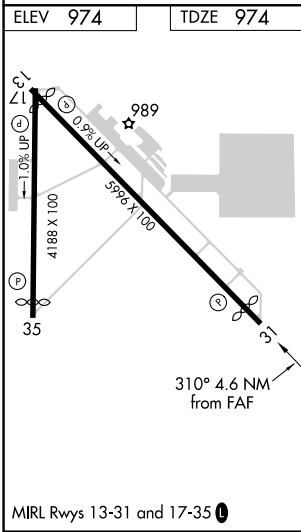
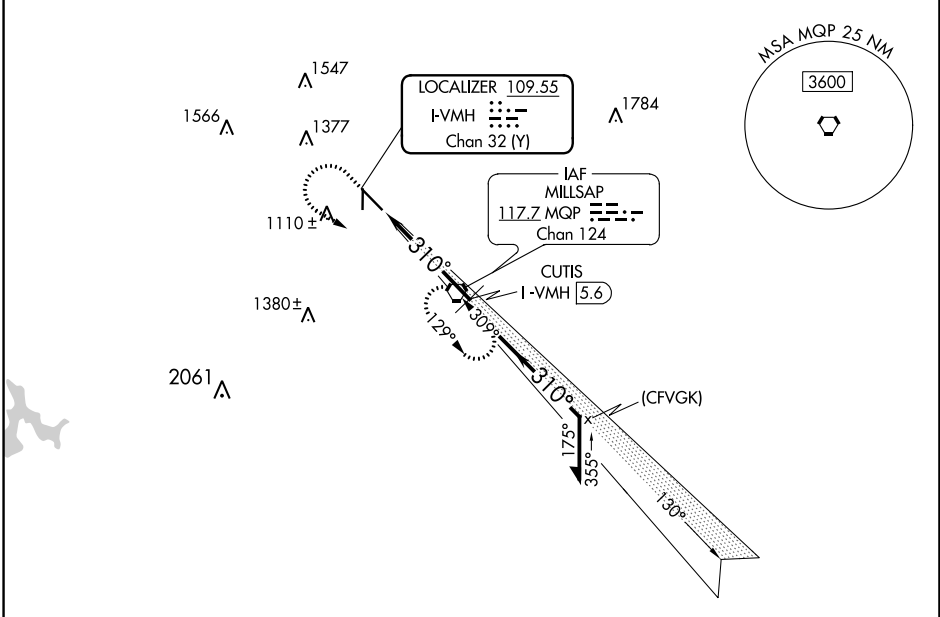
MINERAL WELLS RGNL (MWL)

DME required.

NA Circling to Rwy 17-35 NA at night.
Autopilot coupled approach NA below 1500.

MISSED APPROACH: Climb to 1600 then climbing left turn to 3000 direct MQP VORTAC and hold.

| | | |
|------------------------|---|--|
| ASOS 135.075 | FORT WORTH CENTER 127.0 360.6 | UNICOM 122.725 (CTAF) 0 |
|------------------------|---|--|



| CATEGORY | A | B | C | D |
|-------------------|-----------------------------------|-----------------------|--|--|
| S-ILS 31 | 1174- ³ / ₄ | | 200 (200- ³ / ₄) | |
| S-LOC 31 | 1340-1 | | 366 (400-1) | |
| C CIRCLING | 1420-1 446 (500-1) | 1460-1 486 (500-1) | 1740-2 ¹ / ₄ 766 (800-2 ¹ / ₄) | 1740-2 ¹ / ₂ 766 (800-2 ¹ / ₂) |

SC-2, 13 JUN 2024 to 11 JUL 2024

SC-2, 13 JUN 2024 to 11 JUL 2024