

WAAS CH <b>70639</b> <b>W31A</b>	APP CRS <b>310°</b>	Rwy Idg <b>5596</b> TDZE <b>974</b> Apt Elev <b>974</b>
--	------------------------	---

# RNAV (GPS) RWY 31

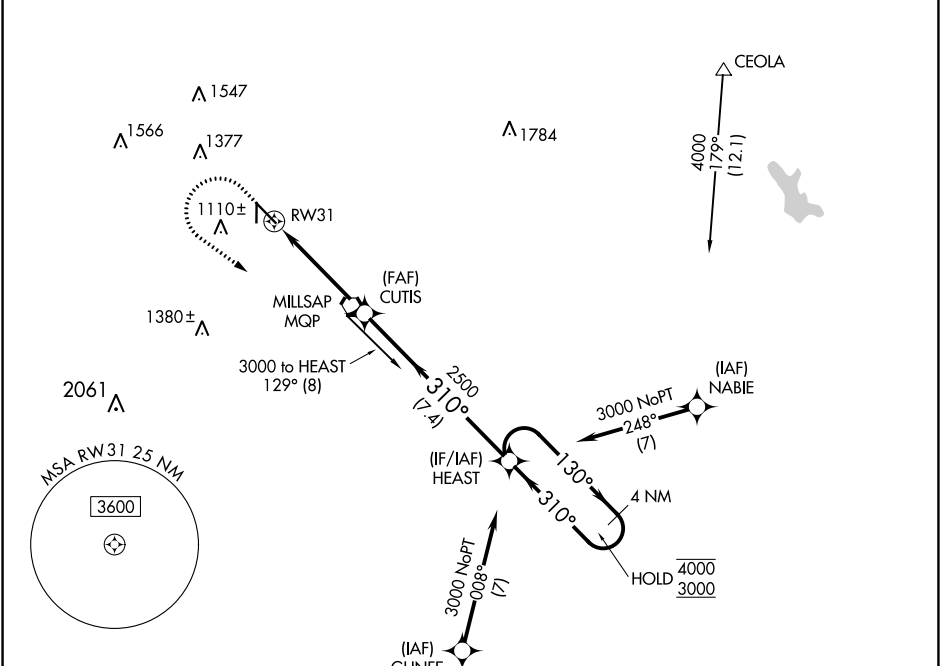
MINERAL WELLS RGNL (MWL)

RNP APCH.

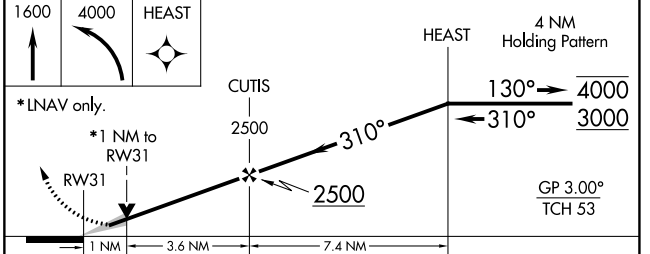
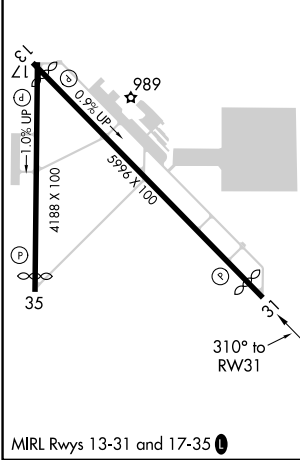
▼ For uncompensated Baro-VNAV systems, LNAV/VNAV NA below -9°C or above 54°C. Circling Rws 17, 35 NA at night.

MISSED APPROACH: Climb to 1600 then climbing left turn to 4000 direct HEAST and hold.

ASOS <b>135.075</b>	FORT WORTH CENTER <b>127.0 360.6</b>	UNICOM <b>122.725 (CTAF) 0</b>
------------------------	---	-----------------------------------



ELEV 974	TDZE 974
----------	----------



CATEGORY	A	B	C	D
LPV DA		1174- <sup>3</sup> / <sub>4</sub>	200 (200- <sup>3</sup> / <sub>4</sub> )	
LNAV/VNAV DA		1224- <sup>3</sup> / <sub>4</sub>	250 (300- <sup>3</sup> / <sub>4</sub> )	
LNAV MDA		1340-1	366 (400-1)	
<input checked="" type="checkbox"/> CIRCLING	1420-1 446 (500-1)	1460-1 486 (500-1)	1740-2 <sup>1</sup> / <sub>4</sub> 766 (800-2 <sup>1</sup> / <sub>4</sub> )	1740-2 <sup>1</sup> / <sub>2</sub> 766 (800-2 <sup>1</sup> / <sub>2</sub> )

SC-2, 13 JUN 2024 to 11 JUL 2024

SC-2, 13 JUN 2024 to 11 JUL 2024