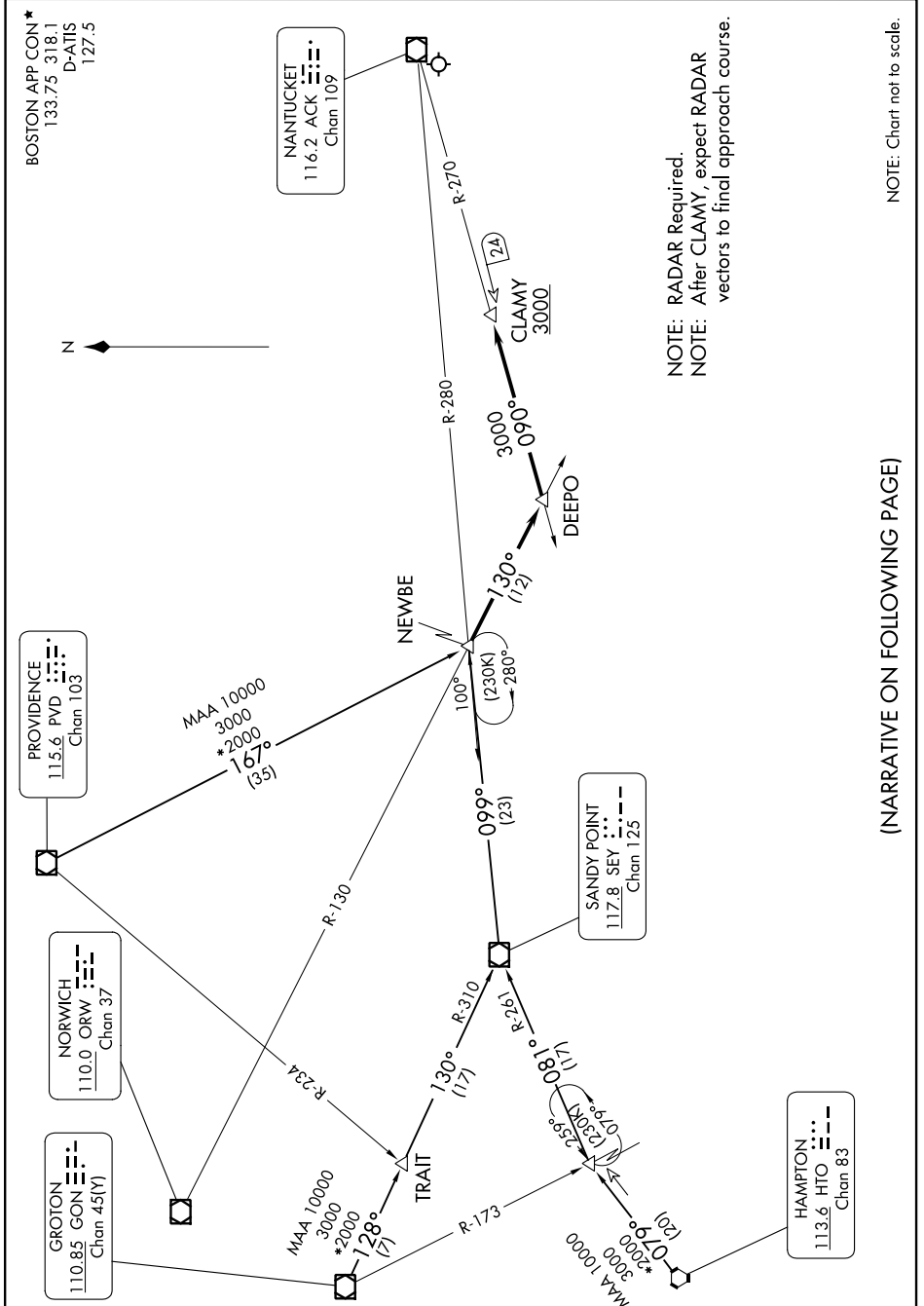


NEWBE THREE ARRIVAL

AL-659 (FAA)

NANTUCKET MEML (ACK)
NANTUCKET, MASSACHUSETTS

NE-1, 13 JUN 2024 to 11 JUL 2024



(NARRATIVE ON FOLLOWING PAGE)

NEWBE THREE ARRIVAL

NANTUCKET, MASSACHUSETTS
NANTUCKET MEML (ACK)

NE-1, 13 JUN 2024 to 11 JUL 2024