

| | | | |
|--|------------------------|-----------------------------|---------------------------------------|
| WAAS CH 93612 W24A | APP CRS 241° | Rwy Idg TDZE Apt Elev | 6303 47 47 |
|--|------------------------|-----------------------------|---------------------------------------|

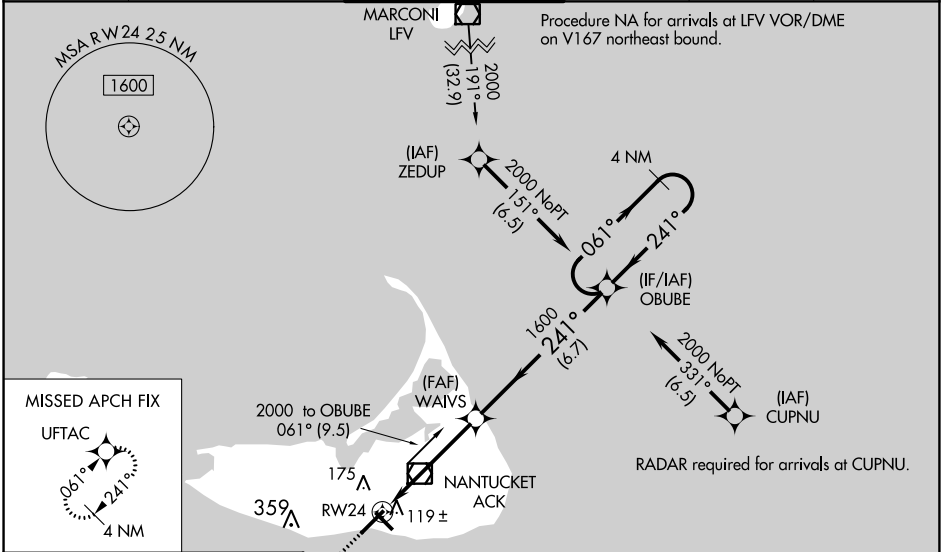
RNAV (GPS) RWY 24

NANTUCKET MEML (ACK)

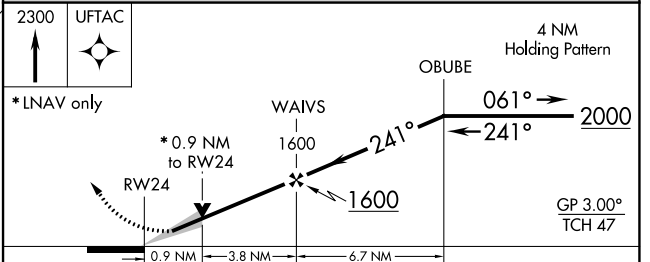
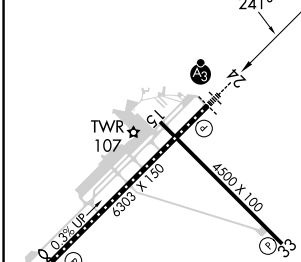
▼ For uncompensated Baro-VNAV systems, LNAV/VNAV NA below -12°C (11°F) or above 54°C (130°F). DME/DME RNP-0.3 NA. Baro-VNAV and VDP NA when using Hyannis altimeter setting. When local altimeter setting not received, use Hyannis altimeter setting and increase LPV DA to 310 feet and LNAV/VNAV DA to 363 feet and all MDA 80 feet, increase LNAV/VNAV all Cats visibility to RVR 3000 and LNAV Cats C/D visibility to RVR 4000 and Circling Cats C/D visibility ¼ SM. For inop SSALR increase LNAV/VNAV all Cats visibility to RVR 4000. For inop SSALR when using Hyannis altimeter setting, increase LPV all Cats visibility to RVR 4500, LNAV/VNAV all Cats to RVR 5000, and LNAV Cats C/D to RVR 6000. ** 2400 RVR when using Hyannis altimeter setting.

SSALR
MISSED APPROACH:
Climb to 2300 direct
UFTAC and hold.

| | | | | | |
|----------------------|---------------------------------------|--|-------------------------|----------------------------|-------------------------|
| ATIS 127.5 | BOSTON APP CON* 126.1 318.1 | NANTUCKET TOWER * 118.3 (CTAF) 0 | GND CON 132.5 | CLNC DEL 119.375 | UNICOM 122.95 |
|----------------------|---------------------------------------|--|-------------------------|----------------------------|-------------------------|



| | | |
|---------|----------|---------|
| ELEV 47 | D | TDZE 47 |
|---------|----------|---------|



| | | | | |
|--|----------------------|----------------------|----------------------|------------------------|
| CATEGORY | A | B | C | D |
| LPV DA** | 247/18 200 (200-½) | | | |
| LNAV/VNAV DA | 300/24 253 (300-½) | | | |
| LNAV MDA | 380/24 | 333 (400-½) | 380/26 | 333 (400-½) |
| <input checked="" type="checkbox"/> CIRCLING | 480-1 433 (500-1) | 500-1 453 (500-1) | 720-2 673 (700-2) | 720-2¼ 673 (700-2¼) |

TDZ/CL Rwy 24
REIL Rwys 15 and 33
MIRL Rwy 15-33
HIRL Rwy 6-24

NE-1, 13 JUN 2024 to 11 JUL 2024

NE-1, 13 JUN 2024 to 11 JUL 2024