


WAAS CH 81912 W06A	APP CRS 061°	Rwy Idg TDZE Apt Elev	5766 38 47
--	------------------------	-----------------------------	---------------------------------------

RNAV (GPS) RWY 6

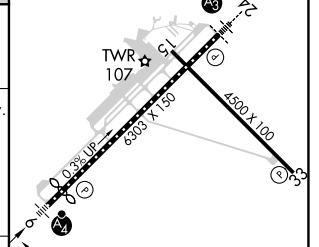
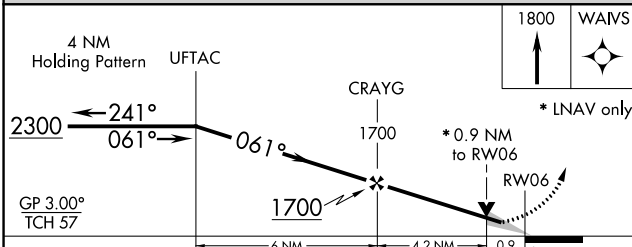
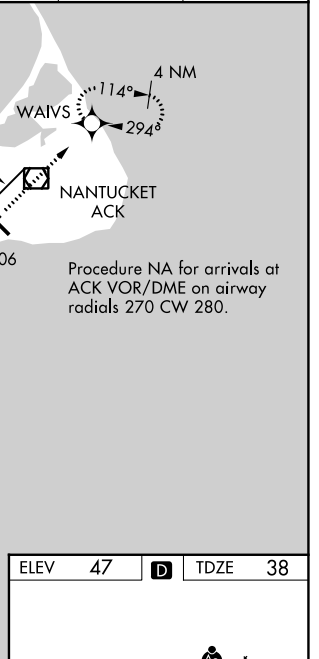
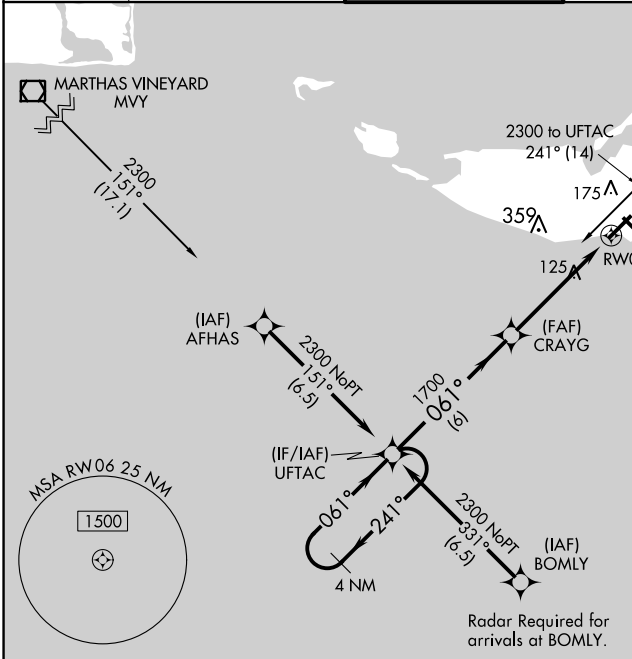
NANTUCKET MEML (ACK)

For uncompensated Baro-VNAV systems, LNAV/VNAV NA below -12°C (11°F) or above 54°C (130°F). DME/DME RNP-0.3 NA. Baro-VNAV and VDP NA when using Hyannis altimeter setting. When local altimeter setting not received, use Hyannis altimeter setting and increase LPV DA to 301, LNAV/VNAV DA to 363 and all MDA 80 feet; increase LNAV Cats C/D visibility to RVR 5000 and Circling Cats C/D visibility ¼ SM. Inoperative table does not apply to LPV. For inoperative ALS increase LNAV/VNAV all Cats visibility to RVR 4500, and LNAV Cat D visibility to RVR 5500. For inoperative ALS when using Hyannis altimeter setting, increase LPV all Cats visibility to RVR 4500, increase LNAV/VNAV all Cats visibility to RVR 6000 and increase LNAV Cats C/D to 1¼ SM.



MALSF 

MISSED APPROACH: Climb to 1800 direct WAWS and hold.

ATIS 127.5	BOSTON APP CON* 126.1 318.1	NANTUCKET TOWER * 118.3 (CTAF) 0	GND CON 132.5	CLNC DEL 119.375	UNICOM 122.95
----------------------	---------------------------------------	--	-------------------------	----------------------------	-------------------------



CATEGORY	A	B	C	D
LPV DA		238/40	200 (200-¾)	
LNAV/VNAV DA		300/40	262 (300-¾)	
LNAV MDA		380/40	342 (400-¾)	
CIRCLING	480-1 433 (500-1)	500-1 453 (500-1)	720-2 673 (700-2)	720-2¼ 673 (700-2¼)

TDZ/CL Rwy 24
REIL Rwys 15 and 33
MIRL Rwy 15-33 
HIRL Rwy 6-24 

NE-1, 13 JUN 2024 to 11 JUL 2024

NE-1, 13 JUN 2024 to 11 JUL 2024