

ACK VOR/DME 116.2 Chan 109	APP CRS 240°	Rwy Idg 6303 TDZE 48 Apt Elev 48
--	------------------------	---

VOR RWY 24

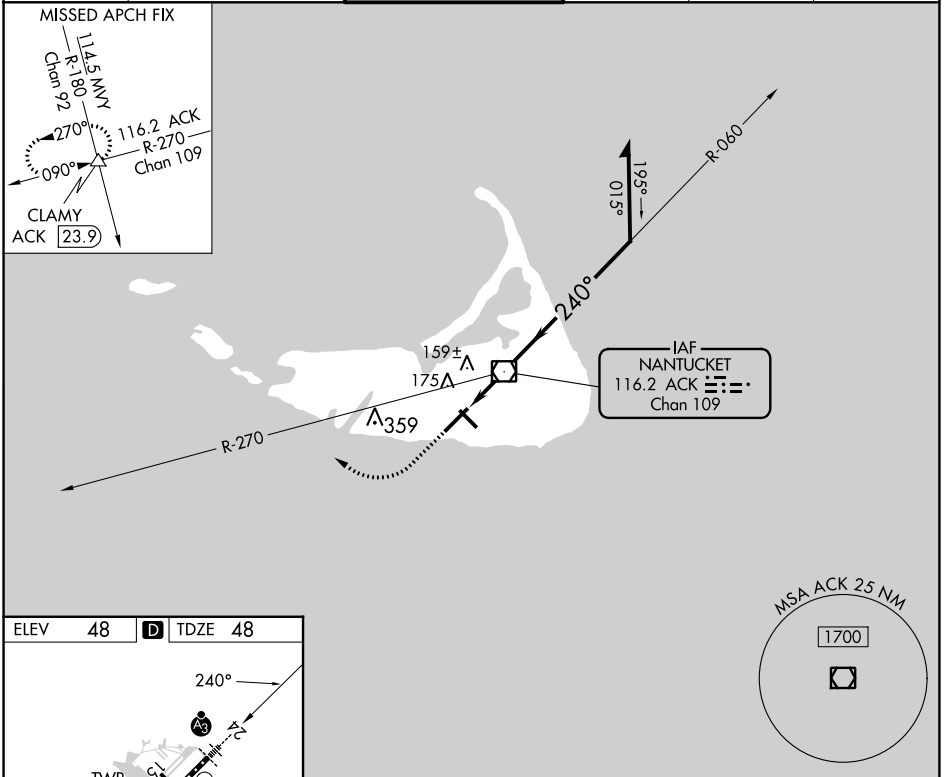
NANTUCKET MEML (ACK)

⚠ When local altimeter setting not received, use Hyannis altimeter setting and increase all MDA 80 feet; increase S-24 Cat C visibility to RVR 4000; increase Circling Cats C/D visibility ¼ SM. VDP NA when using Hyannis altimeter setting. For Inoperative SSALR, increase S-24 Cat D visibility to RVR 6000.

SSALR
A3

MISSED APPROACH: Climb to 700 then climbing right turn to 2500 via heading 310° and ACK VOR/DME R-270 to CLAMY INT/ACK 23.9 DME and hold.

ATIS 127.5	BOSTON APP CON★ 126.1 318.1	NANTUCKET TOWER★ 118.3 (CTAF) 0	GND CON 132.5	CLNC DEL 119.375	UNICOM 122.95
----------------------	---------------------------------------	---	-------------------------	----------------------------	-------------------------



ELEV 48	D	TDZE 48			
TDZ/CL Rwy 24 REIL Rws 15 and 33 MIRL Rwy 15-33 HIRL Rwy 6-24					
FAF to MAP 1.9 NM					
Knots	60	90	120	150	180
Min:Sec	1:54	1:16	0:57	0:46	0:38

700	2500	CLAMY	ACK R-270	CLAMY	ACK VOR/DME	Remain within 10 NM
↑	hdg 310°	△	6000	060°	1800	
			ACK 0.9	3.47°	TCH 48	800
			ACK 1.9			VGSI and descent angles not coincident (VGSI Angle 3.00/TCH 48).
			1 NM	0.9 NM		
CATEGORY	A	B	C	D		
S-24	440/24 393 (400-½)			440/50 393 (400-1)		
C CIRCLING	480-1 433 (500-1)	500-1 453 (500-1)	720-2 673 (700-2)	720-2¼ 673 (700-2¼)		

NE-1, 13 JUN 2024 to 11 JUL 2024

NE-1, 13 JUN 2024 to 11 JUL 2024