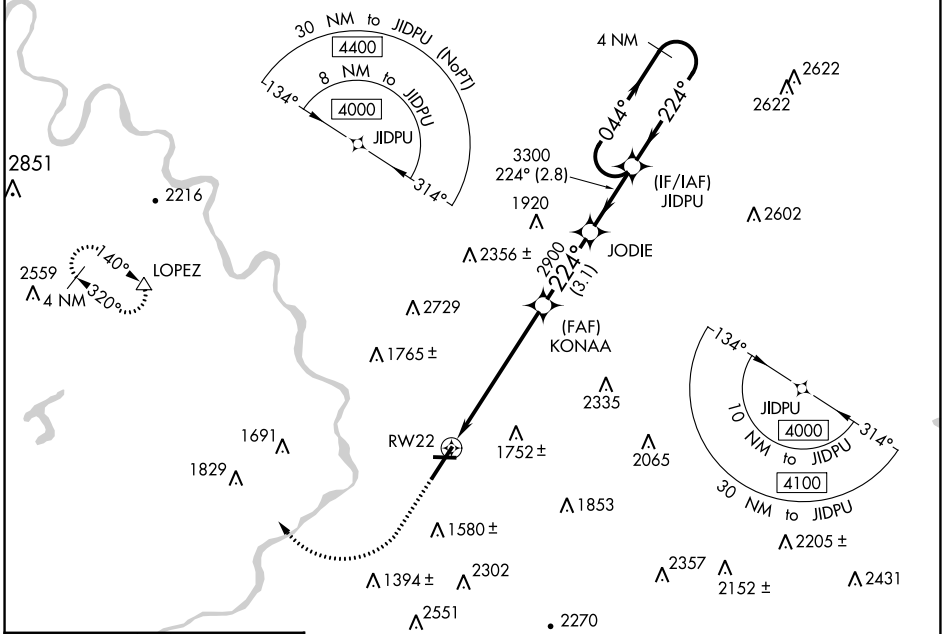


WAAS CH 69213 W22A	APP CRS 224°	Rwy Idg 7502 TDZE 933 Apt Elev 962
--	------------------------	---

RNAV (GPS) RWY 22

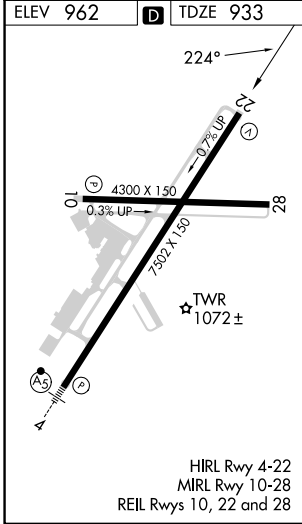
WILKES-BARRE/SCRANTON INTL (AVP)

<p>⚠ Night landing: Rwy 10, 28 NA. For uncompensated Baro-VNAV systems, LNAV/VNAV NA below -17°C (2°F) or above 54°C (130°F). When local altimeter setting not received, procedure NA. Circling NA for Cats C and D southeast of Rwy4-22. DME/DME RNP-0.3 NA.</p>	<p>MISSED APPROACH: Climb to 1900 then climbing right turn to 4000 direct LOPEZ and hold.</p>	
	<p>ATIS 135.75</p>	<p>WILKES-BARRE APP CON 120.95 256.7 (280°-100°) 126.3 256.7 (101°-279°)</p>
		<p>GND CON 121.9</p>



NE-4, 13 JUN 2024 to 11 JUL 2024

NE-4, 13 JUN 2024 to 11 JUL 2024



ELEV 962	D	TDZE 933	<p>1900 4000 LOPEZ VGSI and RNAV glidepath not coincident (VGSI Angle 3.00/TCH 54). 4 NM Holding Pattern</p>	
<p>*LNAV only.</p>			<p>* 1.8 NM to RW22</p>	
<p>RW22</p>			<p>KONAA 2900</p>	
<p>1.8 NM 4.3 NM 3.1 NM 2.8 NM</p>			<p>JODIE 2900</p>	
<p>JIDPU 4000</p>			<p>GP 3.00° TCH 51</p>	
CATEGORY	A	B	C	D
LPV DA		1178/40	245 (200-¾)	
LNAV/VNAV DA		1392-1½	459 (500-1½)	
LNAV MDA	1500/55	567 (600-1)	1500-¾ 567 (600-1¾)	
CIRCLING	1840-1¼	1980-1½	1980-3	2280-3
	878 (900-1¼)	1018 (1100-1½)	1018 (1100-3)	1318 (1400-3)